



## UV lamp

Ultraviolet light offers additional assistance while fighting against unwanted microorganisms. Emitting waves of up to 285 nm, it helps in creating virus and bacteria-free area without negative side effects.



## 56°C sterilization

During the self-cleaning process, the indoor unit operates in a special mode that helps evaporator to dry. This feature is designed to keep the AC indoor unit clean and help prevent bacterial growth.



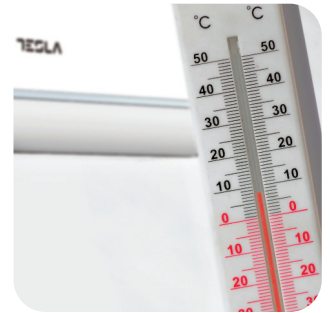
## Night mode

When this mode is activated, your AC can increase or decrease temperature by 1°C per hour during the first three hours.



## Smart airflow

You can choose between different air dispersion positions available, such as blanket-style, shower-style, breeze etc.

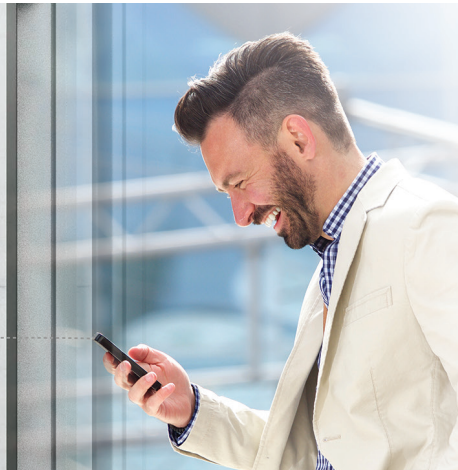


## 8°C heating feature

This option will start the heating mode automatically when the room temperature goes below 8°C, returning to standby once it reaches this number.

## Wi-Fi

Wi-Fi feature means that Tesla air conditioner can also be controlled with mobile phones or other smart devices: an option that adds to your everyday convenience and comfort!





## Features

I Feel / Follow me, Breeze away, ECO, Self-diagnostic, Intelligent defrosting, Intelligent dusting switch, Anti-Rust Cabinet, Independent Dehumidification mode, Super Quiet Design, Low-noise airflow, Turbo mode, Auto mode, Sleep Mode, Fault Code Indication, Emergency button, Auto restart, Timer Auto turn off/of, Five-speed outdoor fan motor, Golden fin, Mono & multi compatibility, 8°C heating feature, Low-Temperature Heating/Cooling, Washable filter, High-density filter, Cold-catalyst filter, Low ambient kit, 1W Standby, Dual side Drainage, Stability Protection, 3D Air Flow, 56°C sterilization, Refrigerant Leakage Detect, Remote control, Louver position memory function, Horizontal louver auto-swing, Hidden led display, Display ON/OFF, Rapid Cooling, and Rapid Heating, RC holder, Hydrophilic Aluminum Fin, Backup Switch, Multi Fan Speed, I-clean, Intelligent on-off, Auto Swing Louver function, Anti-Cold Air, Wi-Fi, Tray Heater

<b>Capacity</b>		12000BTU	
<b>Rated volt and frequency</b>		220-240V~/50HZ	
<b>Mode</b>	V/Hz	<b>Cooling</b>	<b>Heating</b>
<b>Rated capacity</b>		12000(4500~13500)	13500(3000~15500)
<b>Power input</b>	W	925(130~1250)	990(120~1450)
<b>Current input</b>	W	3.9(0.6~5.55)	4.4(0.6~6.4)
<b>SEER-/ Energy Class</b>	A	8,5/A+++	/
<b>SCOP/ Energy Class - average</b>		/	4,6/A++
<b>SCOP/ Energy Class - warmer</b>		/	6,0/A+++
<b>Operating range</b>		15-50	-25-24
<b>Energy consumption ( per year, based on standard test results)</b>	°C	150	/
<b>Energy consumption ( per year, based on standard test results) - average</b>	kWh	/	815
<b>Energy consumption ( per year, based on standard test results) - warmer</b>	kWh	/	678
<b>Dehumidifying</b>	Kg/h	1,7	
<b>Degree of protection (IN) / (OUT)</b>	(IP)	IPX0/IPX4	
<b>Class of electric protection (IN) / (OUT)</b>	Class I / Class II	I/I	
<b>Max. input consumption</b>	W	2200	
<b>Max. current</b>	A	10,5	
<b>Compressor</b>	Model	KSN98D64UFZ3	
	Type	Rotary	
	Brand	GMCC	
<b>Indoor</b>	Indoor Air Circulation	m³/h	560
	Indoor Noise Level dB	dB(A)	41/34/22/21
	Net Dimension	mm	795x225x295
	Packing Dimension	mm	870x370x305
	Net Weight/Gross Weight	Kg	10,2/14,7
<b>Outdoor</b>	Outdoor Noise Level dB	dB(A)	59
	Net Dimension	mm	765x303x555
	Packing Dimension	mm	887x337x610
	Net Weight/Gross Weight	Kg	26.4/28.7
	Refrigerant type		R32
	Refrigerant weight	Kg	0,62
	GWP		675
	tCO <sub>2</sub> eq.		0,41
<b>Max. Discharge/Max. Suction pressure</b>	Mpa	4.3/1.7	
<b>Refrigerant piping</b>	Liquid side/ Gas side/Length	mm	Dg4/Dg8 (1/4-3/8)
	Max. refrigerant pipe length/ Max. difference in level	m	25/10