



## UV lamp

Ultraviolet light offers additional assistance while fighting against unwanted microorganisms. Emitting waves of up to 285 nm, it helps in creating virus and bacteria-free area without negative side effects.



## 56°C sterilization

During the self-cleaning process, the indoor unit operates in a special mode that helps evaporator to dry. This feature is designed to keep the AC indoor unit clean and help prevent bacterial growth.



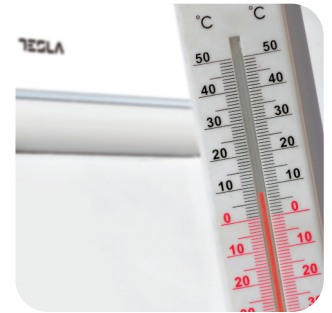
## Night mode

When this mode is activated, your AC can increase or decrease temperature by 1°C per hour during the first three hours.



## Smart airflow

You can choose between different air dispersion positions available, such as blanket-style, shower-style, breeze etc.

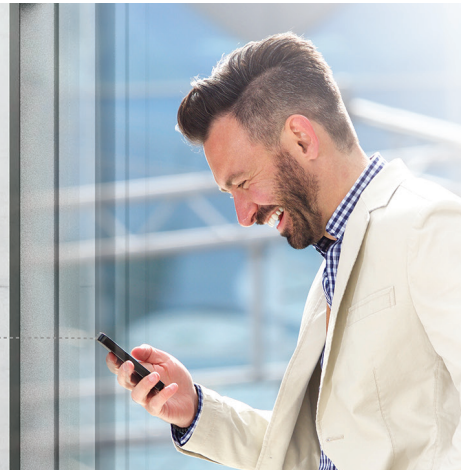


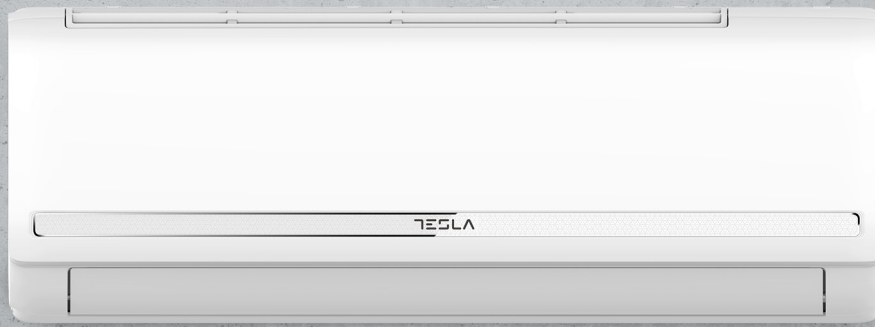
## 8°C heating feature

This option will start the heating mode automatically when the room temperature goes below 8°C, returning to standby once it reaches this number.

## Wi-Fi

Wi-Fi feature means that Tesla air conditioner can also be controlled with mobile phones or other smart devices: an option that adds to your everyday convenience and comfort!





## Features

I Feel / Follow me, Smart Air Flow, ECO, Super EMC performance, Self-diagnostic, Intelligent defrosting, Self-Cleaning Function, Anti-fungus Function, Anti-Rust Cabinet, Independent Dehumidification mode, Super Quiet Design, Low-noise airflow, Turbo mode, Auto mode, Auto mode, Sleep Mode, Fault Code Indication, Emergency button, Auto restart, Timer Auto turn off/on, 4-Fan Speed, Five speed outdoor fan motor, Mono & multi compatibility, 8°C heating feature, Low Temperature Heating/Cooling, Honeycomb filter, Washable filter, High density filter, Dual side Drainage, Stability Protection, 3D Air Flow, 56°C sterilization, Refrigerant Leakage Detect, Remote control, Louver position memory, Horizontal louver auto swing, Hidden led display, Display ON/OFF, Comfortable Cooling, Strong Cooling at 60°C, Rapid Cooling and Rapid Heating, Horizontal swing, RC holder, Additional Health filter, Hydrophilic Aluminum Fin, Backup Switch, Multi Fan Speed Equipped, I-clean, Top plate/cover, Auto Swing Louver function, Anti-Cold Air, Wi Fi, Additional Health filter, Tray Heater

Capacity		12000BTU	
Rated volt and frequency		220-240V~/50HZ	
Mode		Cooling	Heating
Rated capacity	W	3500(800-4100)	3800(1000-4200)
Power input	W	1180(100-1600)	1100(300-1600)
Current input	A	5.6(0.7-7.8)	4.9(1.5-8.0)
SEER / Energy Class		6,1/A++	/
SCOP / Energy Class - average		/	4,0/A+
SCOP / Energy Class - warmer		/	5,1/A+++
Operating range (°C)	°C	16-49	-25-30
Energy consumption (per year, based on standard test results)	kWh	200	/
Energy consumption (per year, based on standard test results) - average	kWh	/	943
Energy consumption (per year, based on standard test results) - warmer	kWh	/	927
Dehumidifying	Kg/h	1,7	
Degree of protection (IN) / (OUT)	(IP)	IPX0/IPX4	
Class of electric protection (IN) / (OUT)	Class I / Class II	I/I	
Max. input consumption	W	1900	
Max. current	A	9,5	
Compressor	Model	KSN98D34UER3	
	Type	Rotary	
	Brand	GMCC	
Indoor	Indoor Air Circulation	m³/h	600
	Indoor Noise Level dB	dB(A)	36/40/45/48/56
	Net Dimension	mm	761×296×199
	Packing Dimension	mm	825×367×277
	Net Weight / Gross Weight	Kg	7,5/10,5
Outdoor	Outdoor Noise Level dB	dB(A)	63
	Net Dimension	mm	705×530×280
	Packing Dimension	mm	825×595×345
	Net Weight / Gross Weight	Kg	22.5/26
	Refrigerant Type		R32
	Refrigerant Weight	Kg	0,56
	GWP		675
	tCO <sub>2</sub> eq.		0,38
Max. Discharge / Max. Suction pressure	Mpa	4.3/2.5	
Refrigerant piping	Liquid side / Gas side / Length	mm	Dg4/Dg8(1/4-3/8)
	Max. refrigerant pipe length / Max. difference in level	m	25/15