



Turbo mode

When the air conditioner goes into Turbo mode, it will maximize its cooling or heating capacity, making the room cooler or warmer rapidly.



I FEEL

The remote control can keep track of the temperature at its current location and send the signal to the air conditioner, so it can optimize the room temperature for your maximum comfort.



Anti-fungus

The air conditioner will start the Anti-fungus feature after exiting cooling and dehumidifying mode. It helps prevent fungi and bacteria from spreading in order to maintain a healthy environment.



Horizontal swing

You can use the horizontal swing feature to adjust the airflow direction, if you prefer the air from the AC to blow sideways.

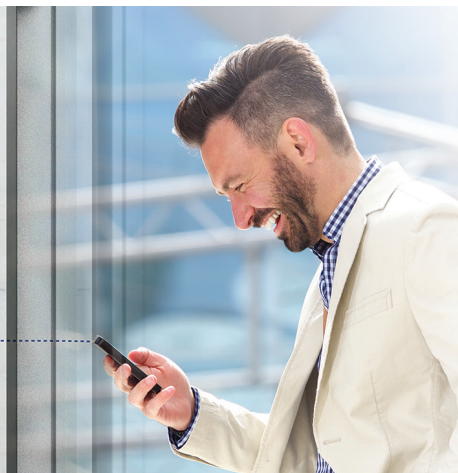


Intelligent defrosting

If the condenser freezes while in heating mode during the times of low outside temperature, the AC will start intelligent defrosting mode.

Wi-Fi

Wi-Fi feature means that Tesla air conditioner can also be controlled with mobile phones or other smart devices: an option that adds to your everyday convenience and comfort!





Features

I Feel / Follow me, Smart Air Flow, ECO, Super EMC performance, Self-diagnostic, Intelligent defrosting, Self-Cleaning Function, Anti-fungus Function, Anti-Rust Cabinet, Independent Dehumidification mode, Super Quiet Design, Low-noise airflow, Turbo mode, Auto mode, Auto mode, Sleep Mode, Fault Code Indication, Emergency button, Auto restart, Timer Auto turn off/on, 4-Fan Speed, Five speed outdoor fan motor, Mono & multi compatibility, 8°C heating feature, Low Temperature Heating/Cooling, Honeycomb filter, Washable filter, High density filter, Dual side Drainage, Stability Protection, 3D Air Flow, 56°C sterilization, Refrigerant Leakage Detect, Remote control, Louver position memory, Horizontal louver auto swing, Hidden led display, Display ON/OFF, Comfortable Cooling, Strong Cooling at 60°C, Rapid Cooling and Rapid Heating, Horizontal swing, RC holder, Additional Health filter, Hydrophilic Aluminum Fin, Backup Switch, Multi Fan Speed Equipped, I-clean, Top plate/cover, Auto Swing Louver function, Anti-Cold Air, Wi Fi, Additional Health filter

Capacity			24000BTU
Rated volt and frequency		V/Hz	220-240V~/50Hz/1P
Mode			Cooling Heating
Rated capacity		W	6840(1830~7820) 7050(1850~7960)
Power input		W	2099(410~2800) 1900(420~3000)
Current input		A	9.8(2.3~13.0) 8.6(2.3~14.0/A+)
SEER / Energy Class			6,5/A++ /
SCOP / Energy Class - average			/ 4.0/A+
SCOP / Energy Class - warmer			/ 5,1/A+++
Operating range (°C)		°C	15-53 -20-30
Energy consumption (per year, based on standard test results)		kWh	366 /
Energy consumption (per year, based on standard test results) - average		kWh	/ 1995
Energy consumption (per year, based on standard test results) - warmer		kWh	/ 1537
Dehumidifying		Kg/h	1,8
Degree of protection (IN) / (OUT)		(IP)	IPX0/IPX4
Class of electric protection (IN) / (OUT)		Class I / Class II	I/I
Max. input consumption		W	3000
Max. current		A	14
Compressor		Model	
		Type	Rotary
		Brand	SANYO
Indoor	Indoor Air Circulation	m ³ /h	1100
	Indoor Noise Level dB	dB(A)	58/52/48/44/41
	Net Dimension	mm	1100×333×222
	Packing Dimension	mm	1165×405×295
	Net Weight / Gross Weight	Kg	14/17
Outdoor	Outdoor Noise Level dB	dB(A)	57
	Net Dimension	mm	920×699×380
	Packing Dimension	mm	960×732×400
	Net Weight / Gross Weight	Kg	40/43
	Refrigerant Type		R32
	Refrigerant Weight	Kg	1,11
	GWP		675
	tCO ₂ eq.		0,75
Max. Discharge / Max. Suction pressure		Mpa	3,7/1,2
Refrigerant piping	Liquid side / Gas side / Length	mm	Dg4/Dg8 (1/4-3/8)
	Max. refrigerant pipe length / Max. difference in level	m	25/10