



UV lamp

Ultraviolet light offers additional assistance while fighting against unwanted microorganisms. Emitting waves of up to 285 nm, it helps in creating virus and bacteria-free area without negative side effects.



56°C sterilization

During the self-cleaning process, the indoor unit operates in a special mode that helps evaporator to dry. This feature is designed to keep the AC indoor unit clean and help prevent bacterial growth.



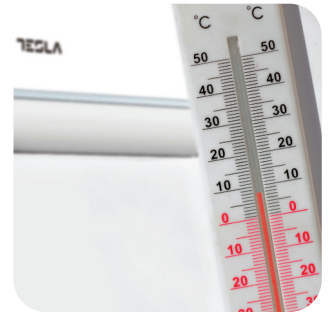
Night mode

When this mode is activated, your AC can increase or decrease temperature by 1°C per hour during the first three hours.



Smart airflow

You can choose between different air dispersion positions available, such as blanket-style, shower-style, breeze etc.

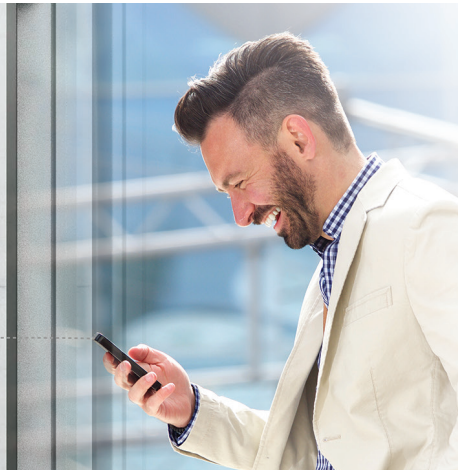


8°C heating feature

This option will start the heating mode automatically when the room temperature goes below 8°C, returning to standby once it reaches this number.

Wi-Fi

Wi-Fi feature means that Tesla air conditioner can also be controlled with mobile phones or other smart devices: an option that adds to your everyday convenience and comfort!





Features

I Feel / Follow me, Smart Air Flow, ECO, Super EMC performance, Self-diagnostic, Intelligent defrosting, Self-Cleaning Function, Anti-fungus Function, Anti-Rust Cabinet, Independent Dehumidification mode, Super Quiet Design, Low-noise airflow, Turbo mode, Auto mode, Auto mode, Sleep Mode, Fault Code Indication, Emergency button, Auto restart, Timer Auto turn off/on, 4-Fan Speed, Five speed outdoor fan motor, Mono & multi compatibility, 8°C heating feature, Low Temperature Heating/Cooling, Honeycomb filter, Washable filter, High density filter, Dual side Drainage, Stability Protection, 3D Air Flow, 56°C sterilization, Refrigerant Leakage Detect, Remote control, Louver position memory, Horizontal louver auto swing, Hidden led display, Display ON/OFF, Comfortable Cooling, Strong Cooling at 60°C, Rapid Cooling and Rapid Heating, Horizontal swing, RC holder, Additional Health filter, Hydrophilic Aluminum Fin, Backup Switch, Multi Fan Speed Equipped, I-clean, Top plate/cover, Auto Swing Louver function, Anti-Cold Air, Wi Fi, Additional Health filter, Tray Heater

Capacity		12000BTU	
Rated volt and frequency	V/Hz	220-240V~/50Hz/1P	
Mode		Cooling Heating	
Rated capacity	W	3400(1000~3770) 3430(1000~3810)	
Power input	W	1049(290-1500) 922(290-1730)	
Current input	A	5.1/A++(1.5-9.0) 4.7(1.5-10.0)	
SEER / Energy Class		6,1/A++ /	
SCOP / Energy Class - average		/ 4.0/A+	
SCOP / Energy Class - warmer		/ 5,1/A+++	
Operating range (°C)	°C	15-53 -20-30	
Energy consumption (per year, based on standard test results)	kWh	195 /	
Energy consumption (per year, based on standard test results) - average	kWh	/ 840	
Energy consumption (per year, based on standard test results) - warmer	kWh	/ 714	
Dehumidifying	Kg/h	1,2	
Degree of protection (IN) / (OUT)	(IP)	IPX0/IPX4	
Class of electric protection (IN) / (OUT)	Class I / Class II	I/I	
Max. input consumption	W	1730	
Max. current	A	10	
Compressor	Model		
	Type	Rotary	
	Brand	GMCC	
Indoor	Indoor Air Circulation	m ³ /h	560
	Indoor Noise Level dB	dB(A)	51/47/43/35/32
	Net Dimension	mm	790×275×192
	Packing Dimension	mm	860×345×265
	Net Weight / Gross Weight	Kg	8,5/10,5
Outdoor	Outdoor Noise Level dB	dB(A)	50
	Net Dimension	mm	777×498×290
	Packing Dimension	mm	818×520×325
	Net Weight / Gross Weight	Kg	24/26
	Refrigerant Type		R32
	Refrigerant Weight	Kg	560
	GWP		675
	tCO ₂ eq.		378,00
	Max. Discharge / Max. Suction pressure	Mpa	3,7/1,2
Refrigerant piping	Liquid side / Gas side / Length	mm	Dg4/Dg8 (1/4-3/8)
	Max. refrigerant pipe length / Max. difference in level	m	25/10