



UV lamp

Ultraviolet light offers additional assistance while fighting against unwanted microorganisms. Emitting waves of up to 285 nm, it helps in creating virus and bacteria-free area without negative side effects.



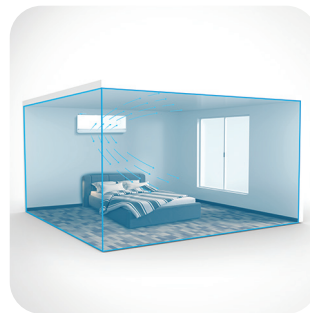
56°C sterilization

During the self-cleaning process, the indoor unit operates in a special mode that helps evaporator to dry. This feature is designed to keep the AC indoor unit clean and help prevent bacterial growth.



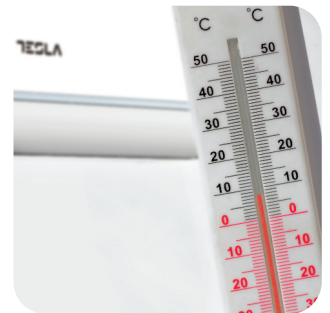
Night mode

When this mode is activated, your AC can increase or decrease temperature by 1°C per hour during the first three hours.



Smart airflow

You can choose between different air dispersion positions available, such as blanket-style, shower-style, breeze etc.

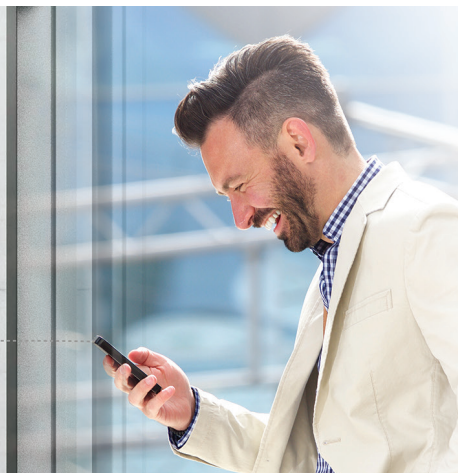


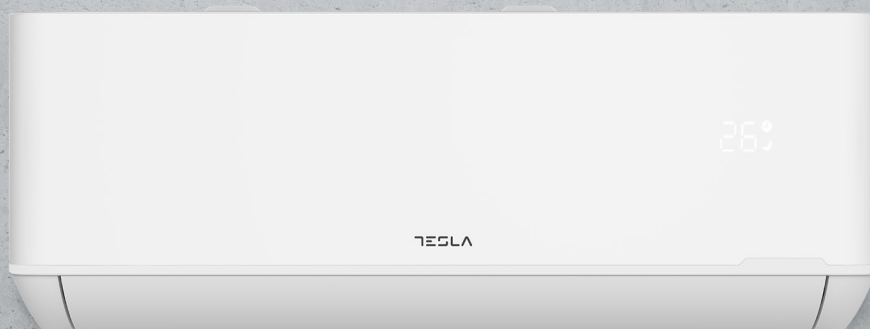
8°C heating feature

This option will start the heating mode automatically when the room temperature goes below 8°C, returning to standby once it reaches this number.

Wi-Fi

Wi-Fi feature means that Tesla air conditioner can also be controlled with mobile phones or other smart devices: an option that adds to your everyday convenience and comfort!





Features

I Feel / Follow me, Smart Air Flow, ECO, Super EMC performance, Self-diagnostic, Intelligent defrosting, Self-Cleaning Function, Anti-fungus Function, Anti-Rust Cabinet, Independent Dehumidification mode, Super Quiet Design, Low-noise airflow, Turbo mode, Auto mode, Auto mode, Sleep Mode, Fault Code Indication, Emergency button, Auto restart, Timer Auto turn off/on, 4-Fan Speed, Five speed outdoor fan motor, Mono & multi compatibility, 8°C heating feature, Low Temperature Heating/Cooling, Honeycomb filter, Washable filter, High density filter, Dual side Drainage, Stability Protection, 3D Air Flow, 56°C sterilization, Refrigerant Leakage Detect, Remote control, Louver position memory, Horizontal louver auto swing, Hidden led display, Display ON/OFF, Comfortable Cooling, Strong Cooling at 60°C, Rapid Cooling and Rapid Heating, Horizontal swing, RC holder, Additional Health filter, Hydrophilic Aluminum Fin, Backup Switch, Multi Fan Speed Equipped, I-clean, Top plate/cover, Auto Swing Louver function, Anti-Cold Air, Wi Fi, Additional Health filter, Tray Heater, Bipolar Ionic Generator

| Capacity | | | 12000BTU | |
|--|--|--|-------------------|-------------------|
| Rated volt and frequency | | V/Hz | 220-240V~/50Hz/1P | |
| Mode | | | Cooling | Heating |
| Rated capacity | | W | 3400(1000~3770) | 3430(1000~3810) |
| Power input | | W | 1049(290-1500) | 922(290-1730) |
| Current input | | A | 5.1/A++(1.5-9.0) | 4.7(1.5-10.0) |
| SEER / Energy Class | | | 6,1/A++ | / |
| SCOP / Energy Class - average | | | / | 4.0/A+ |
| SCOP / Energy Class - warmer | | | / | 5,1/A+++ |
| Operating range (°C) | | °C | 15-53 | -20-30 |
| Energy consumption (per year, based on standard test results) | | kWh | 195 | / |
| Energy consumption (per year, based on standard test results) - average | | kWh | / | 840 |
| Energy consumption (per year, based on standard test results) - warmer | | kWh | / | 714 |
| Dehumidifying | | Kg/h | 1,2 | |
| Degree of protection (IN) / (OUT) | | (IP) | IPX0/IPX4 | |
| Class of electric protection (IN) / (OUT) | | Class I / Class II | I/I | |
| Max. input consumption | | W | 1730 | |
| Max. current | | A | 10 | |
| Compressor | | Model | | |
| | | Type | Rotary | |
| | | Brand | GMCC | |
| Indoor | Indoor Air Circulation | | m³/h | 560 |
| | Indoor Noise Level dB | | dB(A) | 51/47/43/35/32 |
| | Net Dimension | | mm | 790×275×192 |
| | Packing Dimension | | mm | 860×345×265 |
| | Net Weight / Gross Weight | | Kg | 8,5/10,5 |
| Outdoor | Outdoor Noise Level dB | | dB(A) | 50 |
| | Net Dimension | | mm | 777×498×290 |
| | Packing Dimension | | mm | 818×520×325 |
| | Net Weight / Gross Weight | | Kg | 24/26 |
| | Refrigerant Type | | | R32 |
| | Refrigerant Weight | | g | 560 |
| | GWP | | | 675 |
| | tCO ₂ eq. | | | 378,00 |
| | Max. Discharge / Max. Suction pressure | | Mpa | 3,7/1,2 |
| Refrigerant piping | | Liquid side / Gas side / Length | mm | Dg4/Dg8 (1/4-3/8) |
| | | Max. refrigerant pipe length / Max. difference in level | m | 25/10 |