



## UV lamp

Ultraviolet light offers additional assistance while fighting against unwanted microorganisms. Emitting waves of up to 285 nm, it helps in creating virus and bacteria-free area without negative side effects.



## 56°C sterilization

During the self-cleaning process, the indoor unit operates in a special mode that helps evaporator to dry. This feature is designed to keep the AC indoor unit clean and help prevent bacterial growth.



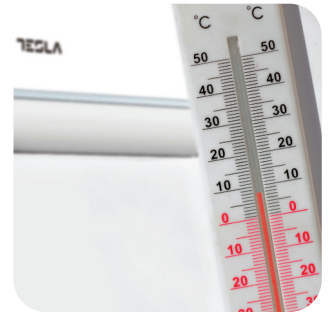
## Night mode

When this mode is activated, your AC can increase or decrease temperature by 1°C per hour during the first three hours.



## Smart airflow

You can choose between different air dispersion positions available, such as blanket-style, shower-style, breeze etc.

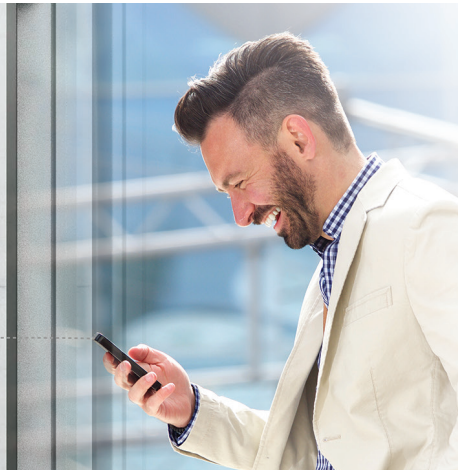


## 8°C heating feature

This option will start the heating mode automatically when the room temperature goes below 8°C, returning to standby once it reaches this number.

## Wi-Fi

Wi-Fi feature means that Tesla air conditioner can also be controlled with mobile phones or other smart devices: an option that adds to your everyday convenience and comfort!





## Features

I Feel / Follow me, Smart Air Flow, ECO, Super EMC performance, Self-diagnostic, Intelligent defrosting, Self-Cleaning Function, Anti-fungus Function, Anti-Rust Cabinet, Independent Dehumidification mode, Super Quiet Design, Low-noise airflow, Turbo mode, Auto mode, Auto mode, Sleep Mode, Fault Code Indication, Emergency button, Auto restart, Timer Auto turn off/on, 4-Fan Speed, Five speed outdoor fan motor, Mono & multi compatibility, 8°C heating feature, Low Temperature Heating/Cooling, Honeycomb filter, Washable filter, High density filter, Dual side Drainage, Stability Protection, 3D Air Flow, 56°C sterilization, Refrigerant Leakage Detect, Remote control, Louver position memory, Horizontal louver auto swing, Hidden led display, Display ON/OFF, Comfortable Cooling, Strong Cooling at 60°C, Rapid Cooling and Rapid Heating, Horizontal swing, RC holder, Additional Health filter, Hydrophilic Aluminum Fin, Backup Switch, Multi Fan Speed Equipped, I-clean, Top plate/cover, Auto Swing Louver function, Anti-Cold Air, Wi Fi, Additional Health filter, UV Lamp, Tray Heater

<b>Capacity</b>			12000BTU
<b>Rated volt and frequency</b>		V/Hz	220-240V~/50HZ
<b>Mode</b>			<b>Cooling</b> <b>Heating</b>
<b>Rated capacity</b>		W	3500(800-4100)                      3800(1000-4100)
<b>Power input</b>		W	1180(100-1600)                      1100(300-1600)
<b>Current input</b>		A	5.6(0.7-7.8)                      4.9(1.5-8.0)
<b>SEER / Energy Class</b>			6,1/A++                      /
<b>SCOP / Energy Class - average</b>			/                      4/A+
<b>SCOP / Energy Class - warmer</b>			/                      5,1/A+++
<b>Operating range (°C)</b>		°C	16-49                      -20-30
<b>Energy consumption (per year, based on standard test results)</b>		kWh	200                      /
<b>Energy consumption (per year, based on standard test results) - average</b>		kWh	/                      943
<b>Energy consumption (per year, based on standard test results) - warmer</b>		kWh	/                      927
<b>Dehumidifying</b>		Kg/h	1
<b>Degree of protection (IN) / (OUT)</b>		(IP)	IPX0/IPX4
<b>Class of electric protection (IN) / (OUT)</b>		Class I / Class II	I/I
<b>Max. input consumption</b>		W	1900
<b>Max. current</b>		A	9,5
<b>Compressor</b>	Model		KSN98D34UER3
	Type		Rotary
	Brand		GMCC
<b>Indoor</b>	Indoor Air Circulation	m <sup>3</sup> /h	600
	Indoor Noise Level dB	dB(A)	37/41/46/49/54
	Net Dimension	mm	761x295x200
	Packing Dimension	mm	825x367x277
	Net Weight / Gross Weight	Kg	8/10.5
<b>Outdoor</b>	Outdoor Noise Level dB	dB(A)	63
	Net Dimension	mm	705x279x530
	Packing Dimension	mm	825x345x595
	Net Weight / Gross Weight	Kg	22.5/26
	Refrigerant Type		R32
	Refrigerant Weight	g	0,56
	GWP		675
	tCO <sub>2</sub> eq.		0,38
<b>Max. Discharge / Max. Suction pressure</b>		Mpa	4.3/2.5
<b>Refrigerant piping</b>	Liquid side / Gas side / Length	mm	Dg4/Dg8(1/4-3/8)
	Max. refrigerant pipe length / Max. difference in level	m	20/10