



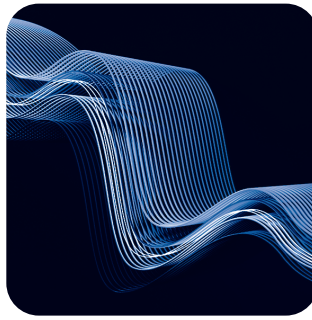
## I FEEL

The remote control can keep track of the temperature at its current location and send the signal to the air conditioner, so it can optimize the room temperature for your maximum comfort.



## HORIZONTAL SWING

You can use the horizontal swing feature to adjust the airflow direction, if you prefer the air from the AC to blow sideways.



## 3D AIRFLOW

Depending on the model, you can choose between different air dispersion positions available, such as blanket-style, shower-style, breeze etc.



## RC HOLDER

Keep your remote control conveniently stored in its holder, so you always know where it is when you need it.



## WI-FI

Wi-Fi feature means that Tesla air conditioner can also be controlled with mobile phones or other smart devices: an option that adds to your everyday convenience and comfort!



## Features

I Feel / Follow me, Smart Air Flow, ECO, Super EMC performance, Self-diagnostic, Intelligent defrosting, Self-Cleaning Function, Anti-fungus Function, Anti-Rust Cabinet, Independent Dehumidification mode, Super Quiet Design, Low-noise airflow, Turbo mode, Auto mode, Sleep Mode, Fault Code Indication, Emergency button, Auto restart, Timer Auto turn off/on, 4-Fan Speed, Five-speed outdoor fan motor, Mono & multi compatibility, 8°C heating feature, Low-Temperature Heating/Cooling, Honeycomb filter, Washable filter, Dual side Drainage, Stability Protection, 56°C sterilization, Refrigerant Leakage Detect, Remote control, Louver position memory, Hidden led display, Display ON/OFF, Comfortable Cooling, Strong Cooling at 60°C, Rapid Cooling and Rapid Heating, RC holder, Hydrophilic Aluminum Fin, Backup Switch, Multi Fan Speed Equipped, I-clean, Top plate/cover, Auto Swing Louver function, Anti-Cold Air, Mute mode, Remote with backlight, Special coating for evaporator

<b>Capacity</b>			24000BTU
<b>Rated volt and frequency</b>		V/Hz	220-240V~/50Hz/1P
<b>Mode</b>			<b>Cooling</b> <b>Heating</b>
<b>Rated capacity</b>		W	6810(1830~7800)                      6870(1850~7900)
<b>Power input</b>		W	2257(410~2824)                      2063(420~3005)
<b>Current input</b>		A	10.7(2.3~12.3)                      9.9(2.3~13.5)
<b>SEER / Energy Class</b>			6,1/A++                      /
<b>SCOP / Energy Class - average</b>			/                      4.0/A+
<b>SCOP / Energy Class - warmer</b>			/                      5,1/A+++
<b>Operating range (°C)</b>		°C	15-53                      -20-30
<b>Energy consumption (per year, based on standard test results)</b>		kWh	390                      /
<b>Energy consumption (per year, based on standard test results) - average</b>		kWh	/                      1680
<b>Energy consumption (per year, based on standard test results) - warmer</b>		kWh	/                      1592
<b>Dehumidifying</b>		Kg/h	1,8
<b>Degree of protection (IN) / (OUT)</b>		(IP)	IPX0/IPX4
<b>Class of electric protection (IN) / (OUT)</b>		Class I / Class II	I/I
<b>Max. input consumption</b>		W	3005
<b>Max. current</b>		A	13,5
<b>Compressor</b>		Model	
		Type	Rotary
		Brand	SANYO
<b>Indoor</b>	Indoor Air Circulation	m <sup>3</sup> /h	980
	Indoor Noise Level dB	dB(A)	54/51/48/44/40
	Net Dimension	mm	1010×315×220
	Packing Dimension	mm	1096×390×297
	Net Weight / Gross Weight	Kg	13/16
<b>Outdoor</b>	Outdoor Noise Level dB	dB(A)	57
	Net Dimension	mm	920×699×380
	Packing Dimension	mm	960×732×400
	Net Weight / Gross Weight	Kg	40/43
	Refrigerant Type		R32
	Refrigerant Weight	g	1,14
	GWP		675
	tCO <sub>2</sub> eq.		0,77
<b>Max. Discharge / Max. Suction pressure</b>		Mpa	3,7/1,2
<b>Refrigerant piping</b>	Liquid side / Gas side / Length	mm	Dg4/Dg8 (1/4-1/2)
	Max. refrigerant pipe length / Max. difference in level	m	25/10