



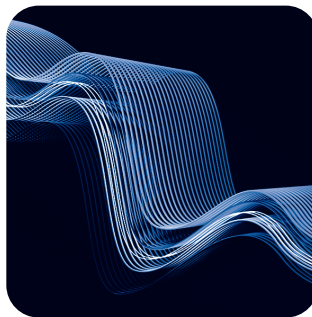
I FEEL

The remote control can keep track of the temperature at its current location and send the signal to the air conditioner, so it can optimize the room temperature for your maximum comfort.



HORIZONTAL SWING

You can use the horizontal swing feature to adjust the airflow direction, if you prefer the air from the AC to blow sideways.



3D AIRFLOW

Depending on the model, you can choose between different air dispersion positions available, such as blanket-style, shower-style, breeze etc.



RC HOLDER

Keep your remote control conveniently stored in its holder, so you always know where it is when you need it.



Mute mode

By adjusting the fan speed of your air conditioning unit, you can decrease the power level as much as possible, while still providing adequate cooling. This way, the noise your unit makes is kept at the lowest possible level.



Features

I Feel / Follow me, Smart Air Flow, ECO, Super EMC performance, Self-diagnostic, Intelligent defrosting, Self-Cleaning Function, Anti-fungus Function, Anti-Rust Cabinet, Independent Dehumidification mode, Super Quiet Design, Low-noise airflow, Turbo mode, Auto mode, Sleep Mode, Fault Code Indication, Emergency button, Auto restart, Timer Auto turn off/on, 4-Fan Speed, Five-speed outdoor fan motor, Mono & multi compatibility, 8°C heating feature, Low-Temperature Heating/Cooling, Honeycomb filter, Washable filter, Dual side Drainage, Stability Protection, 56°C sterilization, Refrigerant Leakage Detect, Remote control, Louver position memory, Hidden led display, Display ON/OFF, Comfortable Cooling, Strong Cooling at 60°C, Rapid Cooling and Rapid Heating, RC holder, Hydrophilic Aluminum Fin, Backup Switch, Multi Fan Speed Equipped, I-clean, Top plate/cover, Auto Swing Louver function, Anti-Cold Air, Mute mode, Remote with backlight, Special coating for evaporator

Capacity			18000BTU
Rated volt and frequency		V/Hz	220-240V~/50Hz/1P
Mode			Cooling Heating
Rated capacity		W	5100(1250-5910) 5100(1250-6070)
Power input		W	1580(330-2340) 1374(340-2520)
Current input		A	8.1(1.7~12.0) 7.0(1.7~13.0)
SEER / Energy Class			6,1/A++ /
SCOP / Energy Class - average			/ 4.0/A+
SCOP / Energy Class - warmer			/ 5,1/A+++
Operating range (°C)		°C	15-53 -20-30
Energy consumption (per year, based on standard test results)		kWh	293 /
Energy consumption (per year, based on standard test results) - average		kWh	/ 1330
Energy consumption (per year, based on standard test results) - warmer		kWh	/ 1373
Dehumidifying		Kg/h	1,5
Degree of protection (IN) / (OUT)		(IP)	IPX0/IPX4
Class of electric protection (IN) / (OUT)		Class I / Class II	I/I
Max. input consumption		W	2520
Max. current		A	13
Compressor		Model	
		Type	Rotary
		Brand	GMCC
Indoor	Indoor Air Circulation	m ³ /h	800
	Indoor Noise Level dB	dB(A)	53/50/47/43/36
	Net Dimension	mm	910×294×206
	Packing Dimension	mm	979×372×277
	Net Weight / Gross Weight	Kg	10/13
Outdoor	Outdoor Noise Level dB	dB(A)	55
	Net Dimension	mm	853×602×349
	Packing Dimension	mm	890×628×385
	Net Weight / Gross Weight	Kg	35/38
	Refrigerant Type		R32
	Refrigerant Weight	Kg	1
	GWP		675
	tCO ₂ eq.		0,68
Max. Discharge / Max. Suction pressure		Mpa	3,7/1,2
Refrigerant piping	Liquid side / Gas side / Length	mm	Dg4/Dg8 (1/4-3/8)
	Max. refrigerant pipe length / Max. difference in level	m	25/10