



## UV lamp

Ultraviolet light offers additional assistance while fighting against unwanted microorganisms. Emitting waves of up to 285 nm, it helps in creating virus and bacteria-free area without negative side effects.



## 56°C sterilization

During the self-cleaning process, the indoor unit operates in a special mode that helps evaporator to dry. This feature is designed to keep the AC indoor unit clean and help prevent bacterial growth.



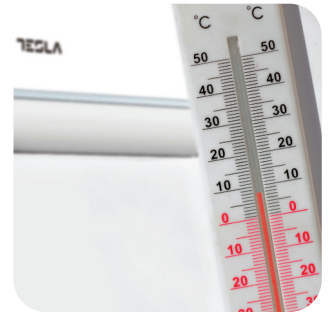
## Night mode

When this mode is activated, your AC can increase or decrease temperature by 1°C per hour during the first three hours.



## Smart airflow

You can choose between different air dispersion positions available, such as blanket-style, shower-style, breeze etc.

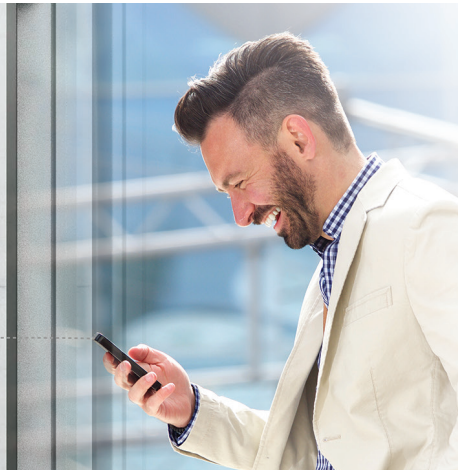


## 8°C heating feature

This option will start the heating mode automatically when the room temperature goes below 8°C, returning to standby once it reaches this number.

## Wi-Fi

Wi-Fi feature means that Tesla air conditioner can also be controlled with mobile phones or other smart devices: an option that adds to your everyday convenience and comfort!





## Features

I Feel / Follow me, Smart Air Flow, ECO, Super EMC performance, Self-diagnostic, Intelligent defrosting, Self-Cleaning Function, Anti-fungus Function, Anti-Rust Cabinet, Independent Dehumidification mode, Super Quiet Design, Low-noise airflow, Turbo mode, Auto mode, Auto mode, Sleep Mode, Fault Code Indication, Emergency button, Auto restart, Timer Auto turn off/on, 4-Fan Speed, Five speed outdoor fan motor, Mono & multi compatibility, 8°C heating feature, Low Temperature Heating/Cooling, Honeycomb filter, Washable filter, High density filter, Dual side Drainage, Stability Protection, 3D Air Flow, 56°C sterilization, Refrigerant Leakage Detect, Remote control, Louver position memory, Horizontal louver auto swing, Hidden led display, Display ON/OFF, Comfortable Cooling, Strong Cooling at 60°C, Rapid Cooling and Rapid Heating, Horizontal swing, RC holder, Additional Health filter, Hydrophilic Aluminum Fin, Backup Switch, Multi Fan Speed Equipped, I-clean, Top plate/cover, Auto Swing Louver function, Anti-Cold Air, Wi Fi, Additional Health filter, Tray Heater

|  |   |                    |                                    |
|--|---|--------------------|------------------------------------|
| <b>Capacity</b>  |   |                    | 9000BTU                            |
| <b>Rated volt and frequency</b>  |   | V/Hz               | 220-240V~/50Hz/1P                  |
| <b>Mode</b>  |   |                    | <b>Cooling</b> <b>Heating</b>      |
| <b>Rated capacity</b>  |   | W                  | 2600(940~3300)      2630(940~3360) |
| <b>Power input</b>   |   | W                  | 802(240-1380)      706(240-1550)   |
| <b>Current input</b>   |   | A                  | 4.7(1.2~8.0)      4.2(1.2~9.0)     |
| <b>SEER / Energy Class</b>   |   |                    | 6,3/A++      /                     |
| <b>SCOP / Energy Class - average</b>   |   |                    | /      4.0/A+                      |
| <b>SCOP / Energy Class - warmer</b>  |   |                    | /      5,1/A+++                    |
| <b>Operating range (°C)</b>  |   | °C                 | 15-53      -20-30                  |
| <b>Energy consumption (per year, based on standard test results)</b>           |   | kWh                | 144      /                         |
| <b>Energy consumption (per year, based on standard test results) - average</b> |   | kWh                | /      738                         |
| <b>Energy consumption (per year, based on standard test results) - warmer</b>  |   | kWh                | /      /                           |
| <b>Dehumidifying</b>   |   | Kg/h               | 1                                  |
| <b>Degree of protection (IN) / (OUT)</b>                                       |   | (IP)               | IPX0/IPX4                          |
| <b>Class of electric protection (IN) / (OUT)</b>                               |   | Class I / Class II | I/I                                |
| <b>Max. input consumption</b>  |   | W                  | 1550                               |
| <b>Max. current</b>  |   | A                  | 9                                  |
| <b>Compressor</b>  |   | Model              |                                    |
|  |   | Type               | Rotary                             |
|  |   | Brand              | GMCC                               |
| <b>Indoor</b>  | Indoor Air Circulation                                  | m <sup>3</sup> /h  | 560                                |
|  | Indoor Noise Level dB                                   | dB(A)              | 51/47/43/35/32                     |
|  | Net Dimension   | mm                 | 790×275×192                        |
|  | Packing Dimension                                       | mm                 | 860×345×265                        |
|  | Net Weight / Gross Weight                               | Kg                 | 8,5/10,5                           |
| <b>Outdoor</b>   | Outdoor Noise Level dB                                  | dB(A)              | 50                                 |
|  | Net Dimension   | mm                 | 777×498×290                        |
|  | Packing Dimension                                       | mm                 | 818×520×325                        |
|  | Net Weight / Gross Weight                               | Kg                 | 24/26                              |
|  | Refrigerant Type  |                    | R32                                |
|  | Refrigerant Weight                                      | Kg                 | 0,57                               |
|  | GWP   |                    | 675                                |
|  | tCO <sub>2</sub> eq.                                    |                    | 0,38                               |
| <b>Max. Discharge / Max. Suction pressure</b>                                  |   | Mpa                | 3,7/1,2                            |
| <b>Refrigerant piping</b>  | Liquid side / Gas side / Length                         | mm                 | Dg4/Dg8 (1/4-3/8)                  |
|  | Max. refrigerant pipe length / Max. difference in level | m                  | 25/10                              |