



## Turbo mode

When the air conditioner goes into Turbo mode, it will maximize its cooling or heating capacity, making the room cooler or warmer rapidly.



## I FEEL

The remote control can keep track of the temperature at its current location and send the signal to the air conditioner, so it can optimize the room temperature for your maximum comfort.



## Anti-fungus

The air conditioner will start the Anti-fungus feature after exiting cooling and dehumidifying mode. It helps prevent fungi and bacteria from spreading in order to maintain a healthy environment.



## Horizontal swing

You can use the horizontal swing feature to adjust the airflow direction, if you prefer the air from the AC to blow sideways.

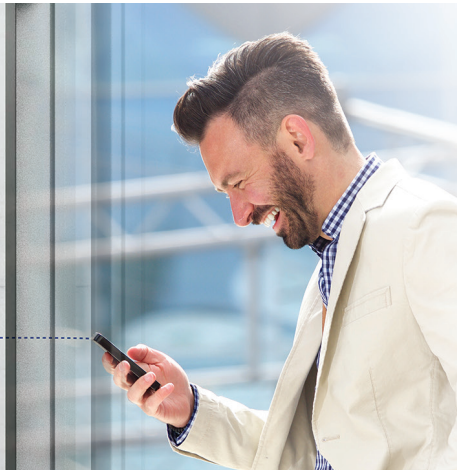


## Intelligent defrosting

If the condenser freezes while in heating mode during the times of low outside temperature, the AC will start intelligent defrosting mode.

## Wi-Fi

Wi-Fi feature means that Tesla air conditioner can also be controlled with mobile phones or other smart devices: an option that adds to your everyday convenience and comfort!





## Features

4-Fan Speed: Low/Middle/High/Turbo, 3D Air Flow: Vertical/Horizontal Auto Swing, Turbo Mode, Anti-cold Air, I Feel, Low Temperature Heating/Cooling -15°C, Comfortable Cooling, Independent Dehumidification, Auto mode, Display On/OFF, smart airflow, Rapid Cooling and Rapid Heating, Intelligent defrost, Emergency Button, Anti-rust proo cabinet, Wide Voltage Range Start-up, Strong Cooling at 60°C, Leakage Detection, Auto-restart, Self-diagnosis, Louver Position Memory, Dual drainage, Washable filter, Hidden Display, Self-cleaning, Refrigerant Leak Detection, Sleep Mode, ECO function, Timer, WIFI, Ionizer filter

<b>Capacity</b>			24000BTU	
<b>Rated volt and frequency</b>		V/Hz	220-240V~/50HZ	
<b>Mode</b>			<b>Cooling</b> <b>Heating</b>	
<b>Rated capacity</b>		W	6810(1830~7800)      6870(1850~7900)	
<b>Power input</b>		W	2257      2063	
<b>Current input</b>		A	10,70      9,90	
<b>SEER-SCOP/ Energy Class</b>		W/W	6,1 A++      4 A+	
<b>Operating range</b>		(°C)	0 - 53°C      -20°C - 30°C	
<b>Energy consumption (per year, based on standard test results)</b>		kwh	390      1680	
<b>Dehumidifying</b>		Kg/h	2,0	
<b>Degree of protection (IN) / (OUT)</b>		(IP)	IPX4/IPX4	
<b>Class of electric protection (IN) / (OUT)</b>		Class I / Class II	I/I	
<b>Max. input consumption</b>		W	3005	
<b>Max. current</b>		A	13,50	
<b>Compressor</b>		Model	KSN98D32UEZ	
		Type	Rotary	
		Brand	SANYO	
<b>Indoor</b>	<b>Fan motor</b>	Model	1170030067G	
		Power input	W 20W output	
		Capacity	uF 2	
		Indoor Fan Speed RPM	r/min ≤1320	
	<b>Indoor fan</b>	Dia. / Length	mm φ92×578	
		Indoor Air Circulation	m³/h 1100	
	<b>Indoor Noise Level dB</b>		dB(A)	51/48/44/40
	<b>Net Dimension (L×W×H)</b>		mm	1010×351×220
<b>Packing Dimension (L×W×H)</b>		mm	1096×390×297	
<b>Net Weight/Gross Weight</b>		Kg	13/16	
<b>Outdoor</b>	<b>Fan motor</b>	Model	1170040162AB	
		Power input	W 33W output	
		Capacity	uF /	
		Outdoor Fan Speed RPM	r/min ≤1000	
	<b>Outdoor fan</b>	Length	mm φ384×134	
	<b>Outdoor Noise Level dB</b>		dB(A)	57
	<b>Net Dimension (L×W×H)</b>		mm	920×699×380
	<b>Packing Dimension (L×W×H)</b>		mm	960×732×400
	<b>Net Weight/Gross Weight</b>		Kg	40/43
	<b>Refrigerant type/weight</b>		g	R32/1.14kg
<b>Max. Discharge/Max. Suction pressure</b>		Mpa	3.7/1.2	
<b>Refrigerant piping</b>	Liquid side / Gas side	mm	6.35/12	
	Max. refrigerant pipe length / Max. difference in level	m	25/10	