



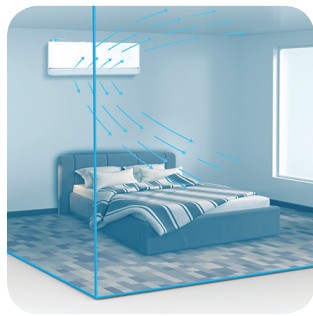
Smart light sensor

If the built-in light sensor detects weaker light intensity for a while, the display will turn off automatically. In case of remote control or app activity, the display will light up softly and the buzzer will gently beep. When the AC detects that the ambient light is strong for some time, it will exit this mode.



HEPA filter

HEPA H11 filter successfully removes PM 2.5 particles, fine dust, microbes and pollen.



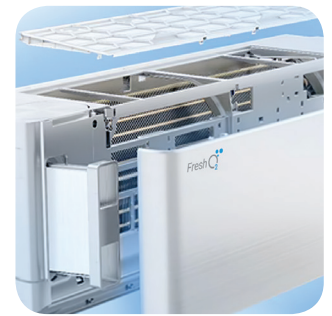
Smarter design

Thanks to the new louver design, you can opt for standard air dispersing position or choose between specific ones: Gentle Cool Wind, Blanket-Style Air Flow, Shower-Style Air Flow or Encircled Air Flow.



Fresh air

Does the air feel stale and stuffy when your AC works for a long time? Not anymore, as the new design of this Tesla model allows outside air intake of up to 30 m³/h! Even when you're not using it in cooling or heating mode, you can opt for Fresh air feature that helps filtrate the air coming from outside.



Easy cleaning

If you want to clean the filters, you can now do it in a couple of simple steps: easily disassemble your AC, replace the HEPA filter and clean the mesh filter, and then reassemble your device.



Wi-Fi feature

Wi-Fi feature means that Tesla air conditioner can also be controlled with mobile phones or other smart devices: an option that adds to your everyday convenience and comfort!



Features

4-Fan Speed: Low/Middle/High/Turbo, 3D Air Flow: Vertical/Horizontal Auto Swing, Turbo Mode, Anti-cold Air, I Feel, Low Temperature Heating/Cooling -15°C, Comfortable Cooling, Independent Dehumidification, Auto mode, Display On/OFF, smart airflow, Rapid Cooling and Rapid Heating, Intelligent defrost, Emergency Button, Anti-rust proo cabinet, Wide Voltage Range Start-up, Strong Cooling at 60°C, Leakage Detection, Auto-restart, Self-diagnosis, Louver Position Memory, Dual drainage, Washable filter, Hidden Display, Self-cleaning, Refrigerant Leak Detection, Sleep Mode, ECO function, Timer, WIFI, O2 fresh air

Capacity			12000BTU
Rated volt and frequency		V/Hz	220-240V~/50HZ
Mode			Cooling Heating
Rated capacity		W	3630(1000~4000) 3900(1000~4500)
Power input		W	921 944
Current input		A	4,70 5,00
SEER-SCOP/ Energy Class		W/W	8,5 A+++ 4,6 A++
Operating range		(°C)	0 - 53°C -20°C - 30°C
Energy consumption (per year, based on standard test results)		kwh	148 822
Dehumidifying		Kg/h	1,2
Degree of protection (IN) / (OUT)		(IP)	IPX4/IPX4
Class of electric protection (IN) / (OUT)		Class I / Class II	I/I
Max. input consumption		W	1950
Max. current		A	10
Compressor		Model	KSN98D32UEZ
		Type	Rotary
		Brand	GMCC
Indoor	Fan motor	Model	1170030067G
		Power input	W 20W output
		Capacity	uF 2
		Indoor Fan Speed RPM	r/min ≤1320
	Indoor fan	Dia. / Length	mm φ92×578
	Indoor Air Circulation	m³/h	1100
	Indoor Noise Level dB	dB(A)	41/42/35/32
	Net Dimension (L×W×H)	mm	960×316×198
Packing Dimension (L×W×H)	mm	1035×390×360	
Net Weight/Gross Weight	Kg	13/15	
Outdoor	Fan motor	Model	1170040162AB
		Power input	W 33W output
		Capacity	uF /
		Outdoor Fan Speed RPM	r/min ≤1000
	Outdoor fan	Length	mm φ384×134
	Outdoor Noise Level dB	dB(A)	51
	Net Dimension (L×W×H)	mm	795×305×549
	Packing Dimension (L×W×H)	mm	835×340×585
	Net Weight/Gross Weight	Kg	26,5/28,5
	Refrigerant type/weight	g	R32/0,805kg
Max. Discharge/Max. Suction pressure	Mpa	3.7/1.2	
Refrigerant piping	Liquid side / Gas side	mm	6.35/9.52
	Max. refrigerant pipe length / Max. difference in level	m	25/10