



Grey or black panel

Bringing a dash of elegance into any room in your home, this Tesla model is available in black or grey, so you can easily incorporate it into any modern interior design.



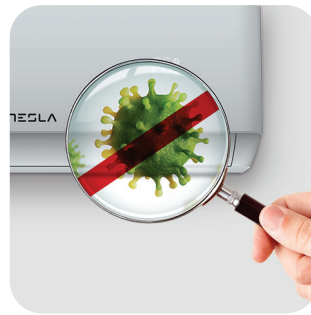
Low-noise airflow

Without decreasing the airflow volume, this device feature can help reduce noise levels of AC indoor unit by lowering the fan speed.



Horizontal swing

You can use the horizontal swing feature to adjust the airflow direction, if you prefer the air from the AC to blow sideways.



Additional health filter: Lysozyme

This AC uses a new type of lysozyme filter, which helps with ensuring air quality. When air goes through the filter, the latter can destroy harmful bacteria and viruses.

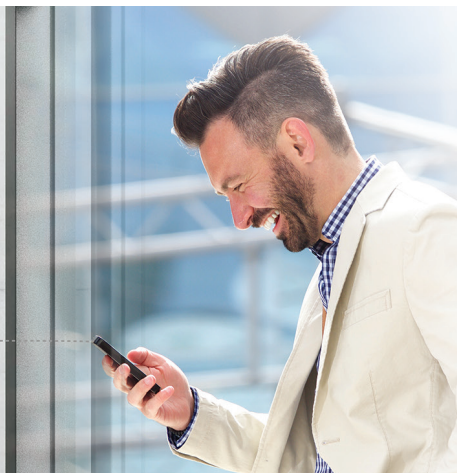


Additional health filter: Ionizer

A certain level of ion saturation makes harmful microorganisms in the air fall to the ground, reducing chances of people inhaling them. Devices with an ionizer can be extremely useful for those suffering from allergies.

Wi-Fi

Wi-Fi feature means that Tesla air conditioner can also be controlled with mobile phones or other smart devices: an option that adds to your everyday convenience and comfort!





Features

I Feel / Follow me, Smart Air Flow, ECO, Super EMC performance, Self-diagnostic, Intelligent defrosting, Self-Cleaning Function, Anti-fungus Function, Anti-Rust Cabinet, Independent Dehumidification mode, Super Quiet Design, Low-noise airflow, Turbo mode, Auto mode, Sleep Mode, Fault Code Indication, Emergency button, Auto restart, Timer Auto turn off/on, 4-Fan Speed, Five-speed outdoor fan motor, Mono & multi compatibility, 8°C heating feature, Low-Temperature Heating/Cooling, Honeycomb filter, Washable filter, Dual side Drainage, Stability Protection, 56°C sterilization, Refrigerant Leakage Detect, Remote control, Louver position memory, Hidden led display, Display ON/OFF, Comfortable Cooling, Strong Cooling at 60°C, Rapid Cooling and Rapid Heating, RC holder, Hydrophilic Aluminum Fin, Backup Switch, Multi Fan Speed Equipped, I-clean, Top plate/cover, Auto Swing Louver function, Anti-Cold Air, Horizontal swing, Wi-Fi, Additional Health filter

Capacity		12000BTU	
Rated volt and frequency	V/Hz	220-240V~/50Hz/1P	
Mode		Cooling	Heating
Rated capacity	W	2600(940~3300)	2610(940~3360)
Power input	W	825(240-1380)	767(240--1552)
Current input	A	4.0(1.2~8.0)	3.8(1.2~9.0)
SEER / Energy Class		6,1/A++	/
SCOP / Energy Class - average		/	4.0/A+
SCOP / Energy Class - warmer		/	5,1/A+++
Operating range (°C)	°C	15-53	-20-30
Energy consumption (per year, based on standard test results)	kWh	149	/
Energy consumption (per year, based on standard test results) - average	kWh	/	700
Energy consumption (per year, based on standard test results) - warmer	kWh	/	604
Dehumidifying	Kg/h	1,2	
Degree of protection (IN) / (OUT)	(IP)	IPX0/IPX4	
Class of electric protection (IN) / (OUT)	Class I / Class II	I/I	
Max. input consumption	W	1552	
Max. current	A	9	
Compressor	Model		
	Type	Rotary	
	Brand	RECHI	
Indoor	Indoor Air Circulation	m ³ /h	550
	Indoor Noise Level dB	dB(A)	50/47/43/35/32
	Net Dimension	mm	777×250×201
	Packing Dimension	mm	840×315×260
	Net Weight / Gross Weight	Kg	7,5/10
Outdoor	Outdoor Noise Level dB	dB(A)	50
	Net Dimension	mm	777×498×290
	Packing Dimension	mm	818×520×325
	Net Weight / Gross Weight	Kg	22/24
	Refrigerant Type		R32
	Refrigerant Weight	Kg	0,49
	GWP		675
	tCO ₂ eq.		0,33
Max. Discharge / Max. Suction pressure	Mpa	3,7/1,2	
Refrigerant piping	Liquid side / Gas side / Length	mm	Dg4/Dg8 (1/4-3/8)
	Max. refrigerant pipe length / Max. difference in level	m	25/10