



UV lamp

Ultraviolet light offers additional assistance while fighting against unwanted microorganisms. Emitting waves of up to 285 nm, it helps in creating virus and bacteria-free area without negative side effects.



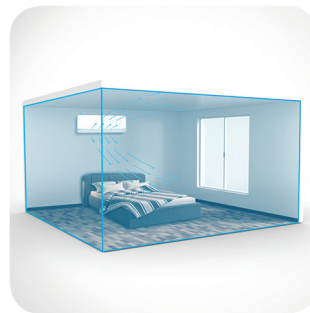
56°C sterilization

During the self-cleaning process, the indoor unit operates in a special mode that helps evaporator to dry. This feature is designed to keep the AC indoor unit clean and help prevent bacterial growth.



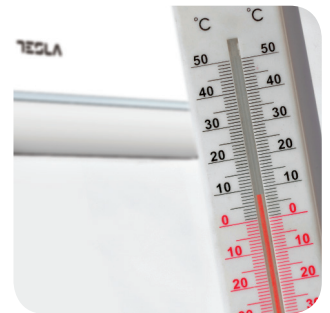
Night mode

When this mode is activated, your AC can increase or decrease temperature by 1°C per hour during the first three hours.



Smart airflow

You can choose between different air dispersion positions available, such as blanket-style, shower-style, breeze etc.

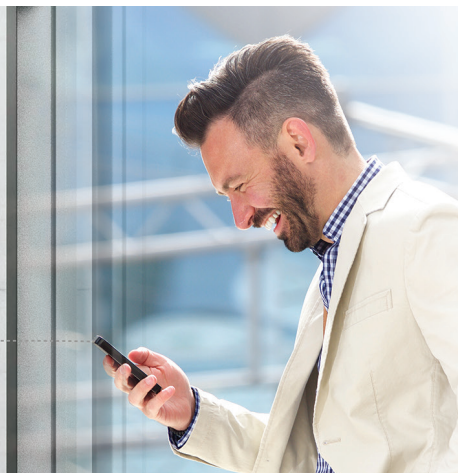


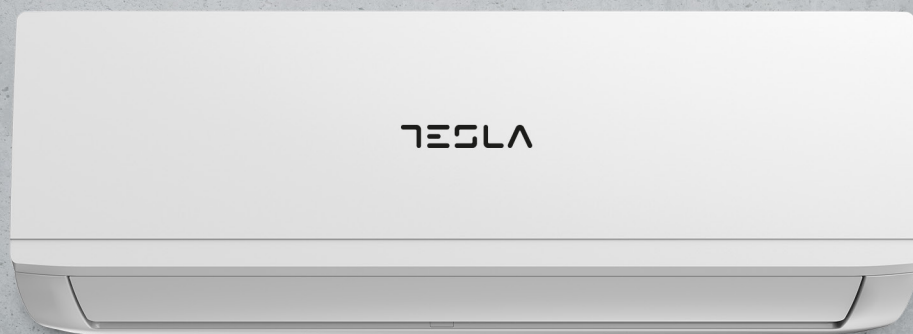
8°C heating feature

This option will start the heating mode automatically when the room temperature goes below 8°C, returning to standby once it reaches this number.

Wi-Fi

Wi-Fi feature means that Tesla air conditioner can also be controlled with mobile phones or other smart devices: an option that adds to your everyday convenience and comfort!





Features

I Feel / Follow me, Breeze away, ECO, Self-diagnostic, Intelligent defrosting, Intelligent dusting switch, Anti-Rust Cabinet, Independent Dehumidification mode, Super Quiet Design, Low-noise airflow, Turbo mode, Auto mode, Sleep Mode, Fault Code Indication, Emergency button, Auto restart, Timer Auto turn off/of, Five-speed outdoor fan motor, Golden fin, Mono & multi compatibility, 8°C heating feature, Low-Temperature Heating/Cooling, Washable filter, High-density filter, Cold-catalyst filter, Low ambient kit, 1W Standby, Dual side Drainage, Stability Protection, 3D Air Flow, 56°C sterilization, Refrigerant Leakage Detect, Remote control, Louver position memory function, Horizontal louver auto-swing, Hidden led display, Display ON/OFF, Rapid Cooling, and Rapid Heating, RC holder, Hydrophilic Aluminum Fin, Backup Switch, Multi Fan Speed, I-clean, Intelligent on-off, Auto Swing Louver function, Anti-Cold Air, Wi-Fi, UV Lamp

Capacity			24000BTU
Rated volt and frequency		V/Hz	220-240V~/50HZ
Mode			Cooling
Rated capacity		W	7030(2080-7950)
Power input		W	2402
Current input		A	10, 5
SEER-SCOP/ Energy Class		W/W	6, 4/ A++
Operating range		(°C)	15°C - 50°C
Energy consumption (per year, based on standard test results)		kwh	405
Dehumidifying		Kg/h	3,0
Degree of protection (IN) / (OUT)		(IP)	IPX4/IPX4
Class of electric protection (IN) / (OUT)		Class I / Class II	I/I
Max. input consumption		W	3700
Max. current		A	19
Compressor	Model		KTF235D22UMT
	Type		Rotary
	Brand		GMCC
Indoor	Fan motor	Model	ZKFP-58-8-1
		Power input	W
		Capacity	uF
		Indoor Fan Speed RPM	r/min
	Indoor fan	Dia. / Length	mm
	Indoor Air Circulation		m³/h
	Indoor Noise Level dB		dB(A)
	Net Dimension (L×W×H)		mm
	Packing Dimension (L×W×H)		mm
	Net Weight/Gross Weight		Kg
Outdoor	Fan motor	Model	ZKFN-50-8-2
		Power input	W
		Capacity	uF
		Outdoor Fan Speed RPM	r/min
	Outdoor fan	Length	mm
	Outdoor Noise Level dB		dB(A)
	Net Dimension (L×W×H)		mm
	Packing Dimension (L×W×H)		mm
	Net Weight/Gross Weight		Kg
	Refrigerant type/weight		g
Refrigerant piping		Max. Discharge/Max. Suction pressure	Mpa
		Liquid side / Gas side	mm
		Max. refrigerant pipe length / Max. difference in level	m