



## UV lamp

Ultraviolet light offers additional assistance while fighting against unwanted microorganisms. Emitting waves of up to 285 nm, it helps in creating virus and bacteria-free area without negative side effects.



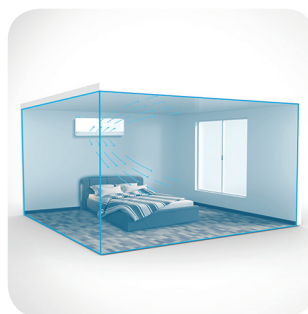
## 56°C sterilization

During the self-cleaning process, the indoor unit operates in a special mode that helps evaporator to dry. This feature is designed to keep the AC indoor unit clean and help prevent bacterial growth.



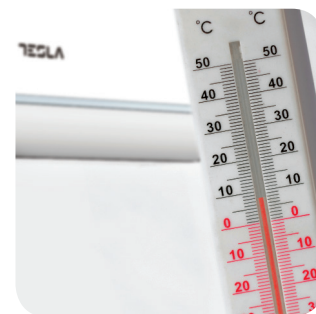
## Night mode

When this mode is activated, your AC can increase or decrease temperature by 1°C per hour during the first three hours.



## Smart airflow

You can choose between different air dispersion positions available, such as blanket-style, shower-style, breeze etc.

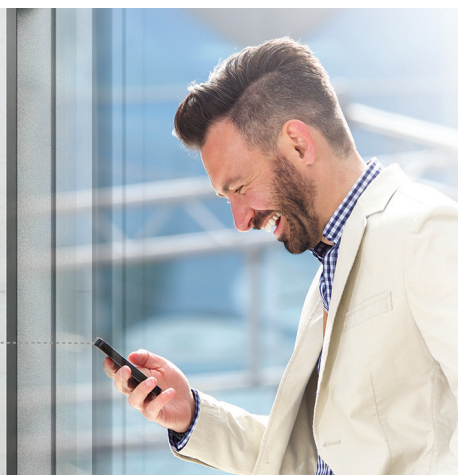


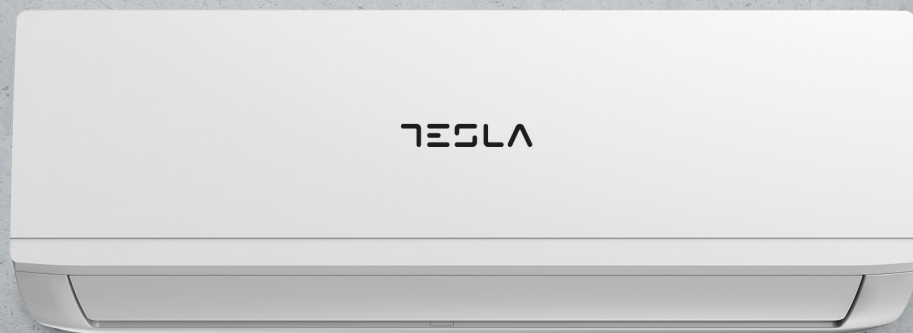
## 8°C heating feature

This option will start the heating mode automatically when the room temperature goes below 8°C, returning to standby once it reaches this number.

## Wi-Fi

Wi-Fi feature means that Tesla air conditioner can also be controlled with mobile phones or other smart devices: an option that adds to your everyday convenience and comfort!





### Features

High density filter, Cold-catalyst filter, i-clean, low ambient kit(function), five speed outdoor fan motor, golden fin, refrigerant leakage detect, 8°C heating (frost protection), low noise airflow system(Silent), turbo operation, horizontal louver autoswing, follow me, Emergency Using (when temp sensor is abnormal), ECO, sleep mode, 1W standby, 2 ways piping connection, auto-restart, timer, π-shaped installation plate, louver position memory function, mono & multi compatible, I Remote (Engineering Mode), Intelligent dusting switch, breeze away, WIFI, UVC lamp

Capacity			24000BTU
Rated volt and frequency		V/Hz	220-240V~/50HZ
Mode			CoolingHeating
Rated capacity		W	7030(2080-7950)7325(1552-8204)
Power input		W	24022130
Current input		A	10, 59, 3
SEER-SCOP/ Energy Class		W/W	6, 4/ A++4, 0/A+
Operating range		(°C)	15°C - 50°C-15°C - 24°C
Energy consumption (per year, based on standard test results)		kwh	4051680
Dehumidifying		Kg/h	3,0
Degree of protection (IN) / (OUT)		(IP)	IPX4/IPX4
Class of electric protection (IN) / (OUT)		Class I / Class II	I/I
Max. input consumption		W	3700
Max. current		A	19
Compressor		Model	KTF235D22UMT
		Type	Rotary
		Brand	GMCC
Indoor	Fan motor	Model	ZKFP-58-8-1
		Power input	W58W output
		Capacity	uF/
		Indoor Fan Speed RPM	r/min1150/1000/850
	Indoor fan	Dia. / Length	mmφ7
	Indoor Air Circulation		m³/h1090
	Indoor Noise Level dB		dB(A)46/37/34.5
	Net Dimension (L×W×H)		mm1083x336x244
	Packing Dimension (L×W×H)		mm1155x415x315
	Net Weight/Gross Weight		Kg13.6/17.3
Outdoor	Fan motor	Model	ZKFN-50-8-2
		Power input	W115W output
		Capacity	uF/
		Outdoor Fan Speed RPM	r/min850
	Outdoor fan	Length	mm815
	Outdoor Noise Level dB		dB(A)62
	Net Dimension (L×W×H)		mm955x342x673
	Packing Dimension (L×W×H)		mm995x398x740
	Net Weight/Gross Weight		Kg43.9/46.9
	Refrigerant type/weight		gR32/1420g
	Max. Discharge/Max. Suction pressure		Mpa4,3/1.7
Refrigerant piping	Liquid side / Gas side	mm	φ6.35/φ15,9
	Max. refrigerant pipe length / Max. difference in level	m	50/25