



UV lamp

Ultraviolet light offers additional assistance while fighting against unwanted microorganisms. Emitting waves of up to 285 nm, it helps in creating virus and bacteria-free area without negative side effects.



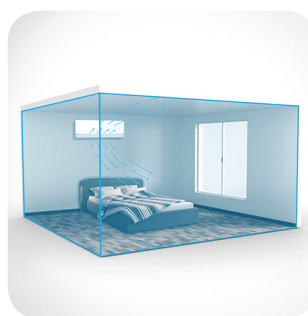
56°C sterilization

During the self-cleaning process, the indoor unit operates in a special mode that helps evaporator to dry. This feature is designed to keep the AC indoor unit clean and help prevent bacterial growth.



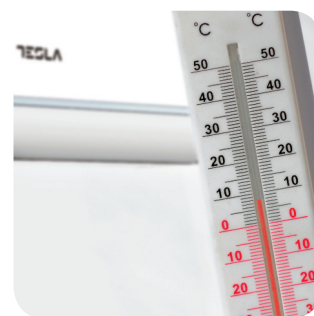
Night mode

When this mode is activated, your AC can increase or decrease temperature by 1°C per hour during the first three hours.



Smart airflow

You can choose between different air dispersion positions available, such as blanket-style, shower-style, breeze etc.

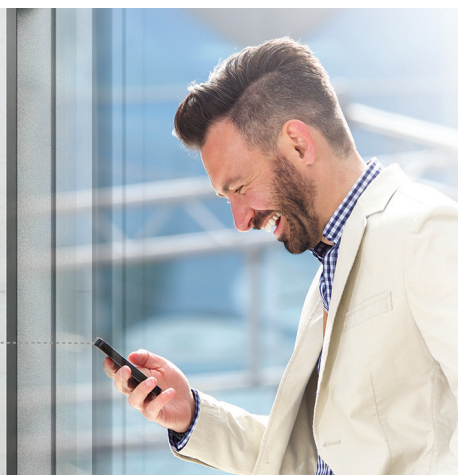


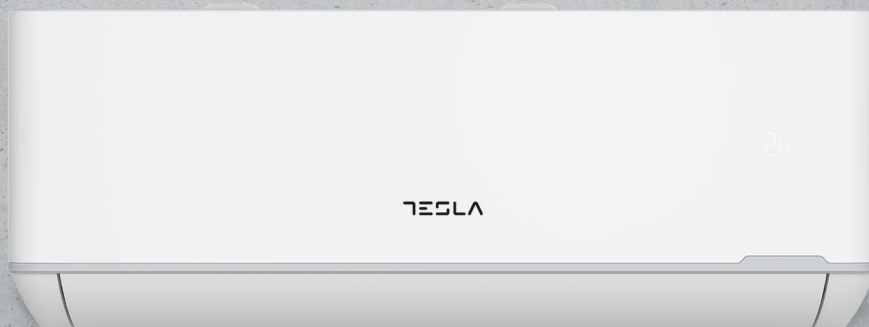
8°C heating feature

This option will start the heating mode automatically when the room temperature goes below 8°C, returning to standby once it reaches this number.

Wi-Fi

Wi-Fi feature means that Tesla air conditioner can also be controlled with mobile phones or other smart devices: an option that adds to your everyday convenience and comfort!





Features

I Feel / Follow me, Smart Air Flow, ECO, Super EMC performance, Self-diagnostic, Intelligent defrosting, Self-Cleaning Function, Anti-fungus Function, Anti-Rust Cabinet, Independent Dehumidification mode, Super Quiet Design, Low-noise airflow, Turbo mode, Auto mode, Auto mode, Sleep Mode, Fault Code Indication, Emergency button, Auto restart, Timer Auto turn off/on, 4-Fan Speed, Five speed outdoor fan motor, Mono & multi compatibility, 8°C heating feature, Low Temperature Heating/Cooling, Honeycomb filter, Washable filter, High density filter, Dual side Drainage, Stability Protection, 3D Air Flow, 56°C sterilization, Refrigerant Leakage Detect, Remote control, Louver position memory, Horizontal louver auto swing, Hidden led display, Display ON/OFF, Comfortable Cooling, Strong Cooling at 60°C, Rapid Cooling and Rapid Heating, Horizontal swing, RC holder, Additional Health filter, Hydrophilic Aluminum Fin, Backup Switch, Multi Fan Speed Equipped, I-clean, Top plate/cover, Auto Swing Louver function, Anti-Cold Air, Wi Fi, Additional Health filter, UV Lamp

Capacity			24000BTU
Rated volt and frequency		V/Hz	220-240V~/50HZ
Mode			Cooling Heating
Rated capacity		W	6840(1830~7820) 7050(1850~7960)
Power input		W	2099 1900
Current input		A	9,80 8,60
SEER-SCOP/ Energy Class		W/W	6,5 A++ 4 A+
Operating range		(°C)	0 - 53°C -20°C - 30°C
Energy consumption (per year, based on standard test results)		kwh	390 1680
Dehumidifying		Kg/h	2,0
Degree of protection (IN) / (OUT)		(IP)	IPX4/IPX4
Class of electric protection (IN) / (OUT)		Class I / Class II	I/I
Max. input consumption		W	3000
Max. current		A	14,00
Compressor	Model		KSN98D32UEZ
	Type		Rotary
	Brand		SANYO
Indoor	Fan motor	Model	1170030067G
		Power input	W
		Capacity	uF
		Indoor Fan Speed RPM	r/min
	Indoor fan	Dia. / Length	mm
	Indoor Air Circulation		m³/h
	Indoor Noise Level dB		dB(A)
	Net Dimension (L×W×H)		mm
	Packing Dimension (L×W×H)		mm
	Net Weight/Gross Weight		Kg
Outdoor	Fan motor	Model	1170040162AB
		Power input	W
		Capacity	uF
		Outdoor Fan Speed RPM	r/min
	Outdoor fan	Length	mm
	Outdoor Noise Level dB		dB(A)
	Net Dimension (L×W×H)		mm
	Packing Dimension (L×W×H)		mm
	Net Weight/Gross Weight		Kg
	Refrigerant type/weight		g
Refrigerant piping		Max. Discharge/Max. Suction pressure	Mpa
		Liquid side / Gas side	mm
		Max. refrigerant pipe length / Max. difference in level	m