



UV lamp

Ultraviolet light offers additional assistance while fighting against unwanted microorganisms. Emitting waves of up to 285 nm, it helps in creating virus and bacteria-free area without negative side effects.



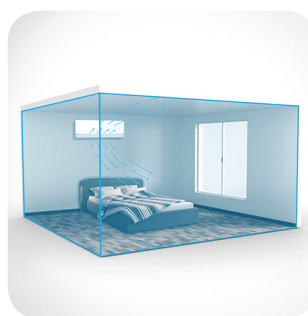
56°C sterilization

During the self-cleaning process, the indoor unit operates in a special mode that helps evaporator to dry. This feature is designed to keep the AC indoor unit clean and help prevent bacterial growth.



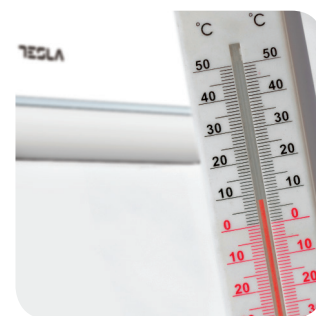
Night mode

When this mode is activated, your AC can increase or decrease temperature by 1°C per hour during the first three hours.



Smart airflow

You can choose between different air dispersion positions available, such as blanket-style, shower-style, breeze etc.

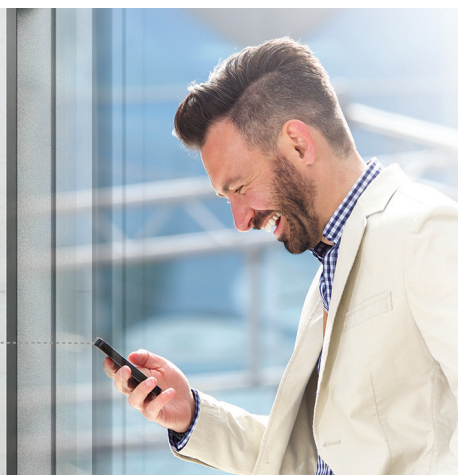


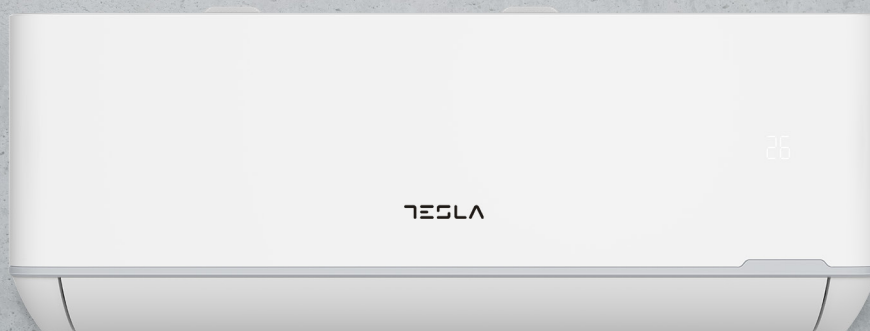
8°C heating feature

This option will start the heating mode automatically when the room temperature goes below 8°C, returning to standby once it reaches this number.

Wi-Fi

Wi-Fi feature means that Tesla air conditioner can also be controlled with mobile phones or other smart devices: an option that adds to your everyday convenience and comfort!





Features

4-Fan Speed: Low/Middle/High/Turbo, 3D Air Flow: Vertical/Horizontal Auto Swing, Turbo Mode, Anti-cold Air, I Feel, Low Temperature Heating/Cooling -15°C, Comfortable Cooling, Independent Dehumidification, Auto mode, Display On/OFF, smart airflow, Rapid Cooling and Rapid Heating, Intelligent defrost, Emergency Button, Anti-rust proo cabinet, Wide Voltage Range Start-up, Strong Cooling at 60°C, Leakage Detection, Auto-restart, Self-diagnosis, Louver Position Memory, Dual drainage, Washable filter, Hidden Display, Self-cleaning, Refrigerant Leak Detection, Sleep Mode, ECO function, Timer, WIFI, UVC Sterilization, Ionizer filter

| | | | |
|--|---|-----------------------|--------------------------------------|
| Capacity | | | 18000BTU |
| Rated volt and frequency | | V/Hz | 220-240V~/50HZ |
| Mode | | | Cooling Heating |
| Rated capacity | | W | 5100(1250-5900) 5130(1250-6080) |
| Power input | | W | 1574 1382 |
| Current input | | A | 8,20 7,20 |
| SEER-SCOP/ Energy Class | | W/W | 6,1 A++ 4 A+ |
| Operating range | | (°C) | 0 - 53°C -20°C - 30°C |
| Energy consumption (per year, based on standard test results) | | kwh | 293 1330 |
| Dehumidifying | | Kg/h | 1,8 |
| Degree of protection (IN) / (OUT) | | (IP) | IPX4/IPX4 |
| Class of electric protection (IN) / (OUT) | | Class I / Class II | I/I |
| Max. input consumption | | W | 2550 |
| Max. current | | A | 13 |
| Compressor | Model | | KSN98D32UEZ |
| | Type | | Rotary |
| | Brand | | SANYO |
| Indoor | Fan motor | Model | 1170030067G |
| | | Power input | W |
| | | Capacity | uF |
| | | Indoor Fan Speed RPM | r/min |
| | Indoor fan | Dia. / Length | |
| | | mm | φ92×578 |
| | Indoor Air Circulation | | m³/h |
| | | | 820 |
| | Indoor Noise Level dB | | dB(A) |
| | | | 50/47/43/36 |
| Outdoor | Fan motor | Model | 1170040162AB |
| | | Power input | W |
| | | Capacity | uF |
| | | Outdoor Fan Speed RPM | r/min |
| | Outdoor fan | Length | |
| | | mm | φ384×134 |
| | Outdoor Noise Level dB | | dB(A) |
| | | | 55 |
| | Net Dimension (L×W×H) | | mm |
| | | | 853×602×349 |
| Refrigerant piping | Packing Dimension (L×W×H) | | mm |
| | | | 890×628×385 |
| | Net Weight/Gross Weight | | Kg |
| | | | 35/38 |
| | Refrigerant type/weight | | g |
| | | | R32/1.00kg |
| | Max. Discharge/Max. Suction pressure | | Mpa |
| | | | 3.7/1.2 |
| | Liquid side / Gas side | | mm |
| | | | 6.35/9.52 |
| | Max. refrigerant pipe length / Max. difference in level | | m |
| | | | 25/10 |