



Turbo mode

When the air conditioner goes into Turbo mode, it will maximize its cooling or heating capacity, making the room cooler or warmer rapidly.



I FEEL

The remote control can keep track of the temperature at its current location and send the signal to the air conditioner, so it can optimize the room temperature for your maximum comfort.



Anti-fungus

The air conditioner will start the Anti-fungus feature after exiting cooling and dehumidifying mode. It helps prevent fungi and bacteria from spreading in order to maintain a healthy environment.



Horizontal swing

You can use the horizontal swing feature to adjust the airflow direction, if you prefer the air from the AC to blow sideways.

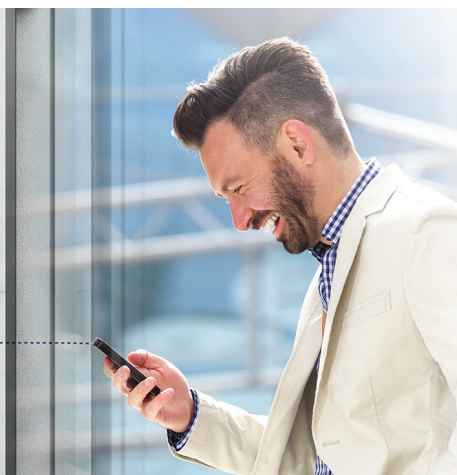


Intelligent defrosting

If the condenser freezes while in heating mode during the times of low outside temperature, the AC will start intelligent defrosting mode.

Wi-Fi

Wi-Fi feature means that Tesla air conditioner can also be controlled with mobile phones or other smart devices: an option that adds to your everyday convenience and comfort!





Features

4-Fan Speed: Low/Middle/High/Turbo, 3D Air Flow: Vertical/Horizontal Auto Swing, Turbo Mode, Anti-cold Air, I Feel, Low Temperature Heating/Cooling -15°C, Comfortable Cooling, Independent Dehumidification, Auto mode, Display On/OFF, smart airflow, Rapid Cooling and Rapid Heating, Intelligent defrost, Emergency Button, Anti-rust proo cabinet, Wide Voltage Range Start-up, Strong Cooling at 60°C, Leakage Detection, Auto-restart, Self-diagnosis, Louver Position Memory, Dual drainage, Washable filter, Hidden Display, Self-cleaning, Refrigerant Leak Detection, Sleep Mode, ECO function, Timer, WIFI, Instalation kit, lonizer filter

Capacity			12000BTU
Rated volt and frequency		V/Hz	220-240V~/50HZ
Mode			Cooling Heating
Rated capacity		W	3400(1000~3770) 3420(1000~3810)
Power input		W	1130 922
Current input		A	5,80 4,70
SEER-SCOP/ Energy Class		W/W	6,1/ A++ 4,0/A+
Operating range		(°C)	0 - 53°C -20°C - 30°C
Energy consumption (per year, based on standard test results)		kwh	195 840
Dehumidifying		Kg/h	1,2
Degree of protection (IN) / (OUT)		(IP)	IPX4/IPX4
Class of electric protection (IN) / (OUT)		Class I / Class II	I/I
Max. input consumption		W	1720
Max. current		A	10
Compressor	Model		KSN98D32UEZ
	Type		Rotary
	Brand		GMCC
Indoor	Fan motor	Model	1170030067G
		Power input	W
		Capacity	uF
		Indoor Fan Speed RPM	r/min
	Indoor fan	Dia. / Length	mm
	Indoor Air Circulation		m³/h
	Indoor Noise Level dB		dB(A)
	Net Dimension (L×W×H)		mm
	Packing Dimension (L×W×H)		mm
	Net Weight/Gross Weight		Kg
Outdoor	Fan motor	Model	1170040162AB
		Power input	W
		Capacity	uF
		Outdoor Fan Speed RPM	r/min
	Outdoor fan	Length	mm
	Outdoor Noise Level dB		dB(A)
	Net Dimension (L×W×H)		mm
	Packing Dimension (L×W×H)		mm
	Net Weight/Gross Weight		Kg
	Refrigerant type/weight		g
Refrigerant piping		Max. Discharge/Max. Suction pressure	Mpa
		Liquid side / Gas side	mm
		Max. refrigerant pipe length / Max. difference in level	m