



Turbo mode

When the air conditioner goes into Turbo mode, it will maximize its cooling or heating capacity, making the room cooler or warmer rapidly.



I FEEL

The remote control can keep track of the temperature at its current location and send the signal to the air conditioner, so it can optimize the room temperature for your maximum comfort.



Anti-fungus

The air conditioner will start the Anti-fungus feature after exiting cooling and dehumidifying mode. It helps prevent fungi and bacteria from spreading in order to maintain a healthy environment.



Horizontal swing

You can use the horizontal swing feature to adjust the airflow direction, if you prefer the air from the AC to blow sideways.

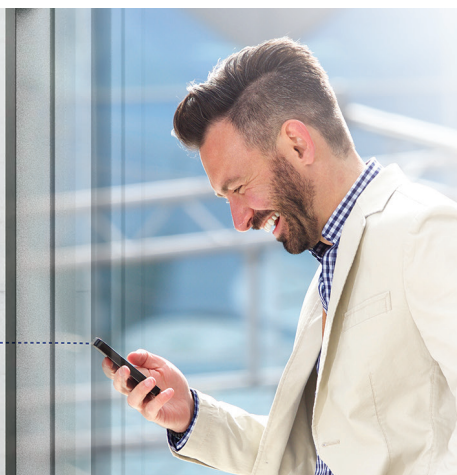


Intelligent defrosting

If the condenser freezes while in heating mode during the times of low outside temperature, the AC will start intelligent defrosting mode.

Wi-Fi

Wi-Fi feature means that Tesla air conditioner can also be controlled with mobile phones or other smart devices: an option that adds to your everyday convenience and comfort!





Features

4-Fan Speed: Low/Middle/High/Turbo, 3D Air Flow: Vertical/Horizontal Auto Swing, Turbo Mode, Anti-cold Air, I Feel, Low Temperature Heating/Cooling -15°C, Comfortable Cooling, Independent Dehumidification, Auto mode, Display On/OFF, smart airflow, Rapid Cooling and Rapid Heating, Intelligent defrost, Emergency Button, Anti-rust proo cabinet, Wide Voltage Range Start-up, Strong Cooling at 60°C, Leakage Detection, Auto-restart, Self-diagnosis, Louver Position Memory, Dual drainage, Washable filter, Hidden Display, Self-cleaning, Refrigerant Leak Detection, Sleep Mode, ECO function, Timer, WIFI, Ionizer filter

Capacity			9000BTU
Rated volt and frequency		V/Hz	220-240V~/50HZ
Mode			CoolingHeating
Rated capacity		W	2600(940~3300)2610(940~3360)
Power input		W	825767
Current input		A	4,003,80
SEER-SCOP/ Energy Class		W/W	6,1/ A++4,0/A+
Operating range		(°C)	0 - 53°C-20°C - 30°C
Energy consumption (per year, based on standard test results)		kwh	149700
Dehumidifying		Kg/h	0,9
Degree of protection (IN) / (OUT)		(IP)	IPX4/IPX4
Class of electric protection (IN) / (OUT)		Class I / Class II	I/I
Max. input consumption		W	1040
Max. current		A	4,0
Compressor	Model		
	Type		Rotary
	Brand		RECHI
Indoor	Fan motor	Model	1170030067G
		Power input	W20W output
		Capacity	uF1,5
		Indoor Fan Speed RPM	r/min≤1320
	Indoor fan	Dia. / Length	mmφ92×578
	Indoor Air Circulation		m³/h550
	Indoor Noise Level dB		dB(A)47/43/35/32
	Net Dimension (L×W×H)		mm777×250×201
	Packing Dimension (L×W×H)		mm840×315×260
	Net Weight/Gross Weight		Kg7,5/10
Outdoor	Fan motor	Model	1170040162AB
		Power input	W33W output
		Capacity	uF/
		Outdoor Fan Speed RPM	r/min≤1000
	Outdoor fan	Length	mmφ384×134
	Outdoor Noise Level dB		dB(A)50
	Net Dimension (L×W×H)		mm712×276×459
	Packing Dimension (L×W×H)		mm765×310×481
	Net Weight/Gross Weight		Kg22/24
	Refrigerant type/weight		gR32/0.49kg
Max. Discharge/Max. Suction pressure		Mpa3.7/1.2	
Refrigerant piping	Liquid side / Gas side	mm	6,35/9,52
	Max. refrigerant pipe length / Max. difference in level	m	25/10