



## UV lamp

Ultraviolet light offers additional assistance while fighting against unwanted microorganisms. Emitting waves of up to 285 nm, it helps in creating virus and bacteria-free area without negative side effects.



## 56°C sterilization

During the self-cleaning process, the indoor unit operates in a special mode that helps evaporator to dry. This feature is designed to keep the AC indoor unit clean and help prevent bacterial growth.



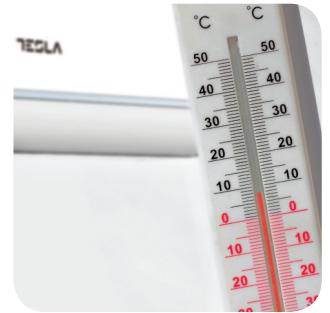
## Night mode

When this mode is activated, your AC can increase or decrease temperature by 1°C per hour during the first three hours.



## Smart airflow

You can choose between different air dispersion positions available, such as blanket-style, shower-style, breeze etc.

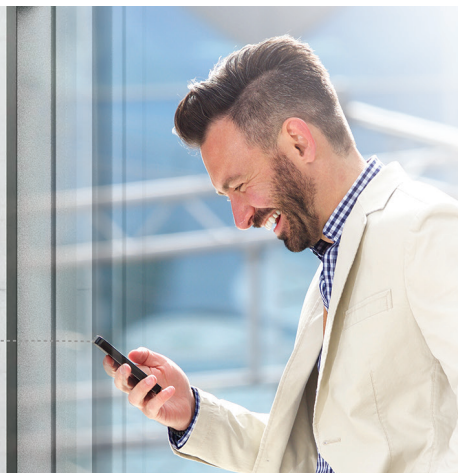


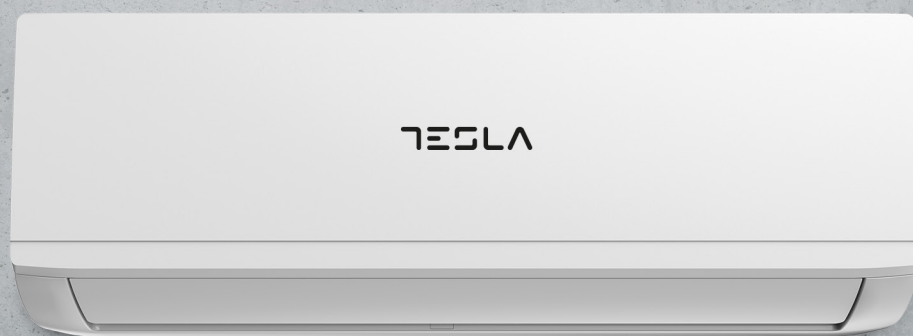
## 8°C heating feature

This option will start the heating mode automatically when the room temperature goes below 8°C, returning to standby once it reaches this number.

## Wi-Fi

Wi-Fi feature means that Tesla air conditioner can also be controlled with mobile phones or other smart devices: an option that adds to your everyday convenience and comfort!





## Features

I Feel / Follow me, Breeze away, ECO, Self-diagnostic, Intelligent defrosting, Intelligent dusting switch, Anti-Rust Cabinet, Independent Dehumidification mode, Super Quiet Design, Low-noise airflow, Turbo mode, Auto mode, Sleep Mode, Fault Code Indication, Emergency button, Auto restart, Timer Auto turn off/of, Five-speed outdoor fan motor, Golden fin, Mono & multi compatibility, 8°C heating feature, Low-Temperature Heating/Cooling, Washable filter, High-density filter, Cold-catalyst filter, Low ambient kit, 1W Standby, Dual side Drainage, Stability Protection, 3D Air Flow, 56°C sterilization, Refrigerant Leakage Detect, Remote control, Louver position memory function, Horizontal louver auto-swing, Hidden led display, Display ON/OFF, Rapid Cooling, and Rapid Heating, RC holder, Hydrophilic Aluminum Fin, Backup Switch, Multi Fan Speed, I-clean, Intelligent on-off, Auto Swing Louver function, Anti-Cold Air, Wi-Fi, UV Lamp

Capacity			18000BTU
Rated volt and frequency		V/Hz	220-240V~/50HZ
Mode			CoolingHeating
Rated capacity		W	5300(3390-5900)5600(3100-5850)
Power input		W	1550(560~2050)1750(780~2000)
Current input		A	6.7(2.4~9)7.6(3.4~8.7)
SEER-SCOP/ Energy Class		W/W	7/ A++4, 0/A+
Operating range		(°C)	15°C - 50°C-15°C - 24°C
Energy consumption (per year, based on standard test results)		kwh	2651470
Dehumidifying		Kg/h	2,0
Degree of protection (IN) / (OUT)		(IP)	IPX4/IPX4
Class of electric protection (IN) / (OUT)		Class I / Class II	I/I
Max. input consumption		W	2500
Max. current		A	13
Compressor		Model	KSN140D21UFZ
		Type	Rotary
		Brand	GMCC
Indoor	Fan motor	Model	ZKFP-30-8-3
		Power input	W36
		Capacity	uF/
		Indoor Fan Speed RPM	r/min1150/1000/850
	Indoor fan	Dia. / Length	mmφ7
	Indoor Air Circulation		m³/h800
	Indoor Noise Level dB		dB(A)56/41/37/31
	Net Dimension (L×W×H)		mm969x320x241
	Packing Dimension (L×W×H)		mm1045x405x315
	Net Weight/Gross Weight		Kg11,2/14,6
Outdoor	Fan motor	Model	ZKFN-34-10-1
		Power input	W/
		Capacity	uF/
		Outdoor Fan Speed RPM	r/min750
	Outdoor fan	Length	mm815
	Outdoor Noise Level dB		dB(A)65
	Net Dimension (L×W×H)		mm874x330x554
	Packing Dimension (L×W×H)		mm915x370x615
	Net Weight/Gross Weight		Kg33,5/36,1
	Refrigerant type/weight		gR32/1100g
	Max. Discharge/Max. Suction pressure		Mpa4,6/1,7
Refrigerant piping	Liquid side / Gas side	mm	φ6.35/φ12,7
	Max. refrigerant pipe length / Max. difference in level	m	30/20