



## Turbo mode

When the air conditioner goes into Turbo mode, it will maximize its cooling or heating capacity, making the room cooler or warmer rapidly.



## I FEEL

The remote control can keep track of the temperature at its current location and send the signal to the air conditioner, so it can optimize the room temperature for your maximum comfort.



## Anti-fungus

The air conditioner will start the Anti-fungus feature after exiting cooling and dehumidifying mode. It helps prevent fungi and bacteria from spreading in order to maintain a healthy environment.



## Horizontal swing

You can use the horizontal swing feature to adjust the airflow direction, if you prefer the air from the AC to blow sideways.

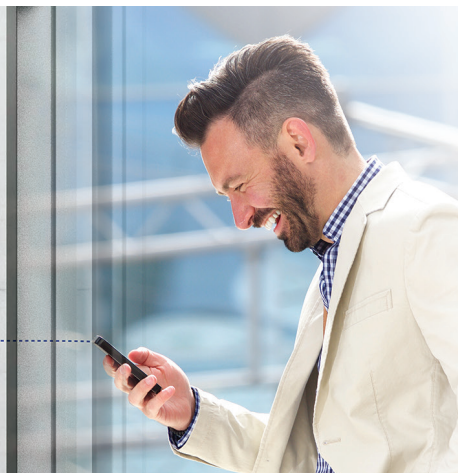


## Intelligent defrosting

If the condenser freezes while in heating mode during the times of low outside temperature, the AC will start intelligent defrosting mode.

## Wi-Fi

Wi-Fi feature means that Tesla air conditioner can also be controlled with mobile phones or other smart devices: an option that adds to your everyday convenience and comfort!





## Features

I Feel / Follow me, ECO, Self-diagnostic, Intelligent defrosting, Self-Cleaning Function, Intelligent dusting, Anti-Rust Cabinet, Independent Dehumidification mode, Super Quiet Design, Low-noise airflow, Turbo mode, Auto mode, Sleep Mode, Fault Code Indication, Emergency button, Auto restart, Timer, 4-Fan Speed, Five-speed outdoor fan, 12 grades indoor fan speed, Golden fin, Mono & multi compatibility, 8°C heating feature, Low-Temperature Heating/Cooling, Washable filter, High-density filter, Cold-catalyst filter, Super Ionizer, Low ambient kit, 1W Standby, Dual side Drainage, 3D Air Flow, Refrigerant Leakage Detect, Remote control, Louver position memory function, Horizontal louver auto-swing, Hidden led display, Display ON/OFF, RC holder, Hydrophilic Aluminum Fin, Backup Switch, Intelligent on-off, Auto Swing Louver function, Anti-Cold Air, Horizontal swing, Wi-Fi

<b>Capacity</b>			18000BTU
<b>Rated volt and frequency</b>			220-240V~/50HZ
<b>Mode</b>		V/Hz	<b>Cooling</b> <b>Heating</b>
<b>Rated capacity</b>			18000(6200~21000)                      19000(4400~23000)
<b>Power input</b>		W	1550(140~2300)                      1570(220~2350)
<b>Current input</b>		W	6.7(0.6~10)                      6.8(0.95~10.2)
<b>SEER-/ Energy Class</b>		A	7,4/A++                      /
<b>SCOP/ Energy Class - average</b>			/                      4,0/A+
<b>SCOP/ Energy Class - warmer</b>			/                      5,1/A+++
<b>Operating range</b>			15-50                      -20-30
<b>Energy consumption ( per year, based on standard test results)</b>		°C	247                      /
<b>Energy consumption ( per year, based on standard test results) - average</b>		kWh	/                      1435
<b>Energy consumption ( per year, based on standard test results) - warmer</b>		kWh	/                      1208
<b>Dehumidifying</b>		Kg/h	2,5
<b>Degree of protection (IN) / (OUT)</b>		(IP)	IPX0/IPX4
<b>Class of electric protection (IN) / (OUT)</b>		Class I / Class II	I/I
<b>Max. input consumption</b>		W	2500
<b>Max. current</b>		A	13
<b>Compressor</b>		Model	KSN140D21UFZ
		Type	Rotary
		Brand	GMCC
<b>Indoor</b>	Indoor Air Circulation	m <sup>3</sup> /h	840
	Indoor Noise Level dB	dB(A)	42.5/36/26/20
	Net Dimension	mm	957x213x302
	Packing Dimension	mm	1035x295x385
	Net Weight/Gross Weight	Kg	10/13
<b>Outdoor</b>	Outdoor Noise Level dB	dB(A)	63
	Net Dimension	mm	805x330x554
	Packing Dimension	mm	915x370x615
	Net Weight/Gross Weight	Kg	32.7/35.4
	Refrigerant type		R32
	Refrigerant weight	Kg	1,08
	GWP		675
	tCO <sub>2</sub> eq.		0,72
<b>Max. Discharge/Max. Suction pressure</b>		<b>Mpa</b>	4.3/1.7
<b>Refrigerant piping</b>	Liquid side/ Gas side/Length	mm	Dg4/Dg8 (1/4-1/2)
	Max. refrigerant pipe length/ Max. difference in level	m	30/20