



## Turbo mode

When the air conditioner goes into Turbo mode, it will maximize its cooling or heating capacity, making the room cooler or warmer rapidly.



## I FEEL

The remote control can keep track of the temperature at its current location and send the signal to the air conditioner, so it can optimize the room temperature for your maximum comfort.



## Anti-fungus

The air conditioner will start the Anti-fungus feature after exiting cooling and dehumidifying mode. It helps prevent fungi and bacteria from spreading in order to maintain a healthy environment.



## Horizontal swing

You can use the horizontal swing feature to adjust the airflow direction, if you prefer the air from the AC to blow sideways.

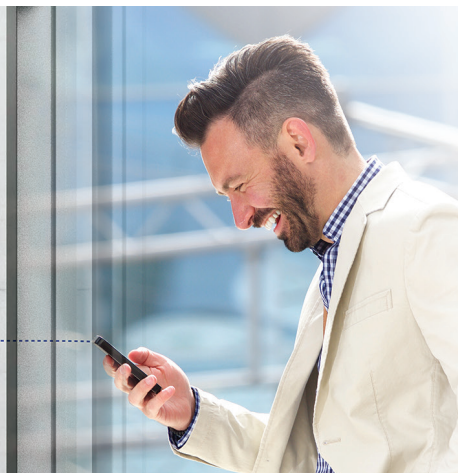


## Intelligent defrosting

If the condenser freezes while in heating mode during the times of low outside temperature, the AC will start intelligent defrosting mode.

## Wi-Fi

Wi-Fi feature means that Tesla air conditioner can also be controlled with mobile phones or other smart devices: an option that adds to your everyday convenience and comfort!





## Features

I Feel / Follow me, ECO, Self-diagnostic, Intelligent defrosting, Self-Cleaning Function, Intelligent dusting, Anti-Rust Cabinet, Independent Dehumidification mode, Super Quiet Design, Low-noise airflow, Turbo mode, Auto mode, Sleep Mode, Fault Code Indication, Emergency button, Auto restart, Timer, 4-Fan Speed, Five-speed outdoor fan, 12 grades indoor fan speed, Golden fin, Mono & multi compatibility, 8°C heating feature, Low-Temperature Heating/Cooling, Washable filter, High-density filter, Cold-catalyst filter, Super Ionizer, Low ambient kit, 1W Standby, Dual side Drainage, 3D Air Flow, Refrigerant Leakage Detect, Remote control, Louver position memory function, Horizontal louver auto-swing, Hidden led display, Display ON/OFF, RC holder, Hydrophilic Aluminum Fin, Backup Switch, Intelligent on-off, Auto Swing Louver function, Anti-Cold Air, Horizontal swing, Wi-Fi

<b>Capacity</b>			18000BTU
<b>Rated volt and frequency</b>		V/Hz	220-240V~/50HZ
<b>Mode</b>			<b>Cooling</b> <b>Heating</b>
<b>Rated capacity</b>		W	5300(1820-6125)                      5600(1370-6740)
<b>Power input</b>		W	1539(140~2360)                      1480(200~2410)
<b>Current input</b>		A	6.9(0.6~10.3)                      6.4(0.9~10.5)
<b>SEER-SCOP/ Energy Class</b>		W/W	7, 4/ A++                      4, 1/A+
<b>Operating range</b>		(°C)	15°C - 50°C                      -15°C - 24°C
<b>Energy consumption (per year, based on standard test results)</b>		kwh	247                      1435
<b>Dehumidifying</b>		Kg/h	2,0
<b>Degree of protection (IN) / (OUT)</b>		(IP)	IPX4/IPX4
<b>Class of electric protection (IN) / (OUT)</b>		Class I / Class II	I/I
<b>Max. input consumption</b>		W	2950
<b>Max. current</b>		A	13,5
<b>Compressor</b>		<b>Model</b>	KSN140D21UFZ
		<b>Type</b>	Rotary
		<b>Brand</b>	GMCC
<b>Indoor</b>	<b>Fan motor</b>	<b>Model</b>	ZKFP-30-8-3
		<b>Power input</b>	W                      36
		<b>Capacity</b>	uF                      /
		<b>Indoor Fan Speed RPM</b>	r/min                      1130/900/800
	<b>Indoor fan</b>	<b>Dia. / Length</b>	mm                      φ7
	<b>Indoor Air Circulation</b>		m <sup>3</sup> /h                      800
	<b>Indoor Noise Level dB</b>		dB(A)                      44/37/30/25
	<b>Net Dimension (L×W×H)</b>		mm                      957x213x302
	<b>Packing Dimension (L×W×H)</b>		mm                      1035x295x380
<b>Net Weight/Gross Weight</b>		Kg                      10/13	
<b>Outdoor</b>	<b>Fan motor</b>	<b>Model</b>	ZKFN-40-8-1L-5
		<b>Power input</b>	W                      /
		<b>Capacity</b>	uF                      /
		<b>Outdoor Fan Speed RPM</b>	r/min                      800
	<b>Outdoor fan</b>	<b>Length</b>	mm                      815
	<b>Outdoor Noise Level dB</b>		dB(A)                      63
	<b>Net Dimension (L×W×H)</b>		mm                      800x333x554
	<b>Packing Dimension (L×W×H)</b>		mm                      920x390x615
	<b>Net Weight/Gross Weight</b>		Kg                      34/36,7
	<b>Refrigerant type/weight</b>		g                      R32/1080g
<b>Max. Discharge/Max. Suction pressure</b>		Mpa                      4,3/1,7	
<b>Refrigerant piping</b>	<b>Liquid side / Gas side</b>		mm                      φ6.35/φ12,7
	<b>Max. refrigerant pipe length / Max. difference in level</b>		m                      30/20