



UV lamp

Ultraviolet light offers additional assistance while fighting against unwanted microorganisms. Emitting waves of up to 285 nm, it helps in creating virus and bacteria-free area without negative side effects.



56°C sterilization

During the self-cleaning process, the indoor unit operates in a special mode that helps evaporator to dry. This feature is designed to keep the AC indoor unit clean and help prevent bacterial growth.



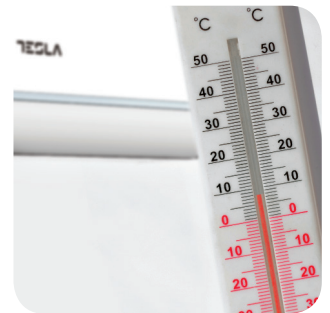
Night mode

When this mode is activated, your AC can increase or decrease temperature by 1°C per hour during the first three hours.



Smart airflow

You can choose between different air dispersion positions available, such as blanket-style, shower-style, breeze etc.

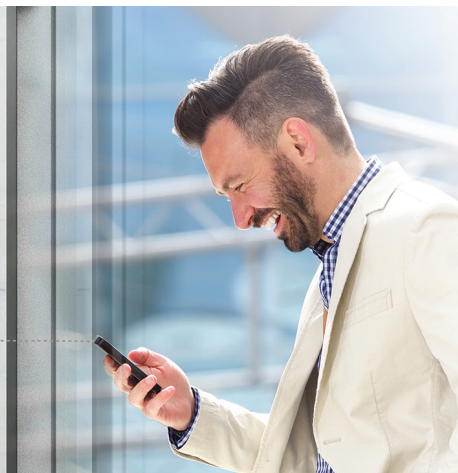


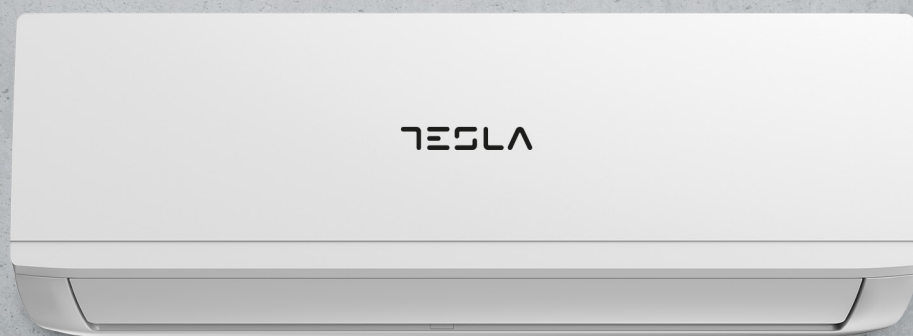
8°C heating feature

This option will start the heating mode automatically when the room temperature goes below 8°C, returning to standby once it reaches this number.

Wi-Fi

Wi-Fi feature means that Tesla air conditioner can also be controlled with mobile phones or other smart devices: an option that adds to your everyday convenience and comfort!





Features

I Feel / Follow me, Breeze away, ECO, Self-diagnostic, Intelligent defrosting, Intelligent dusting switch, Anti-Rust Cabinet, Independent Dehumidification mode, Super Quiet Design, Low-noise airflow, Turbo mode, Auto mode, Sleep Mode, Fault Code Indication, Emergency button, Auto restart, Timer Auto turn off/of, Five-speed outdoor fan motor, Golden fin, Mono & multi compatibility, 8°C heating feature, Low-Temperature Heating/Cooling, Washable filter, High-density filter, Cold-catalyst filter, Low ambient kit, 1W Standby, Dual side Drainage, Stability Protection, 3D Air Flow, 56°C sterilization, Refrigerant Leakage Detect, Remote control, Louver position memory function, Horizontal louver auto-swing, Hidden led display, Display ON/OFF, Rapid Cooling, and Rapid Heating, RC holder, Hydrophilic Aluminum Fin, Backup Switch, Multi Fan Speed, I-clean, Intelligent on-off, Auto Swing Louver function, Anti-Cold Air, Wi-Fi, UV Lamp

Capacity			12000BTU
Rated volt and frequency		V/Hz	220-240V~/50HZ
Mode			Cooling Heating
Rated capacity		W	3600(1250-4310) 3900(1250-4380)
Power input		W	1096(110-1650) 1027(110-1480)
Current input		A	4.76(0.5~7.2) 4.46(0.5~6.4)
SEER-SCOP/ Energy Class		W/W	7/ A++ 4, 2/A+
Operating range		(°C)	15°C - 50°C -15°C - 24°C
Energy consumption (per year, based on standard test results)		kwh	182 833
Dehumidifying		Kg/h	1,0
Degree of protection (IN) / (OUT)		(IP)	IPX4/IPX4
Class of electric protection (IN) / (OUT)		Class I / Class II	I/I
Max. input consumption		W	2150
Max. current		A	10
Compressor	Model		KSK103D33UEZ3(YJ)
	Type		Rotary
	Brand		GMCC
Indoor	Fan motor	Model	ZKFP-13-8-4
		Power input	W
		Capacity	uF
		Indoor Fan Speed RPM	700/900/1050
	Indoor fan	Dia. / Length	mm φ7
	Indoor Air Circulation		m³/h 530
	Indoor Noise Level dB		dB(A) 56/37/32/22
	Net Dimension (L×W×H)		mm 835x208x295
	Packing Dimension (L×W×H)		mm 905x290x356
	Net Weight/Gross Weight		Kg 8,7/11,5
Outdoor	Fan motor	Model	ZKFN-20-8-1
		Power input	W
		Capacity	uF
		Outdoor Fan Speed RPM	r/min 800
	Outdoor fan	Length	mm 815
	Outdoor Noise Level dB		dB(A) 62
	Net Dimension (L×W×H)		mm 720x270x495
	Packing Dimension (L×W×H)		mm 835x300x540
	Net Weight/Gross Weight		Kg 23,7/25,5
	Refrigerant type/weight		g R32/650g
	Max. Discharge/Max. Suction pressure		Mpa 4,3/1.7
Refrigerant piping		Liquid side / Gas side	mm φ6.35/φ9,52
		Max. refrigerant pipe length / Max. difference in level	m 25/10