



Turbo mode

When the air conditioner goes into Turbo mode, it will maximize its cooling or heating capacity, making the room cooler or warmer rapidly.



I FEEL

The remote control can keep track of the temperature at its current location and send the signal to the air conditioner, so it can optimize the room temperature for your maximum comfort.



Anti-fungus

The air conditioner will start the Anti-fungus feature after exiting cooling and dehumidifying mode. It helps prevent fungi and bacteria from spreading in order to maintain a healthy environment.



Horizontal swing

You can use the horizontal swing feature to adjust the airflow direction, if you prefer the air from the AC to blow sideways.

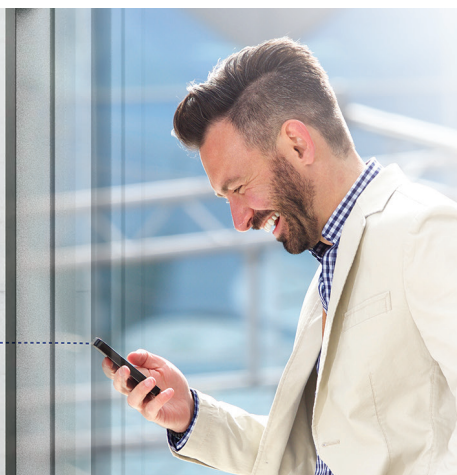


Intelligent defrosting

If the condenser freezes while in heating mode during the times of low outside temperature, the AC will start intelligent defrosting mode.

Wi-Fi

Wi-Fi feature means that Tesla air conditioner can also be controlled with mobile phones or other smart devices: an option that adds to your everyday convenience and comfort!





Features

High density filter, Cold-catalyst filter, self-cleaning, super ionizer, low ambient kit (function), five speed outdoor fan motor, golden fin, refrigerant leakage detect, turbo operation, horizontal louver autoswing, Emergency Using (when temp sensor is abnormal), sleep mode, 1W standby, 2 ways piping connection, auto-restart, timer, H-shaped installation plate, louver position memory function, mono & multi compatible, I Remote (Engineering Mode), Intelligent dusting switch, breeze away, WIFI

Capacity			12000BTU
Rated volt and frequency		V/Hz	220-240V~/50HZ
Mode			Cooling Heating
Rated capacity		W	3510(1110~4160) 3810(1080~4220)
Power input		W	1213(130~1580) 1088(100~1680)
Current input		A	5.27(0.5~6.9) 4.73(0.4~6.9)
SEER-SCOP/ Energy Class		W/W	6, 1/ A++ 4, 0/A+
Operating range		(°C)	15°C - 50°C -15°C - 24°C
Energy consumption (per year, based on standard test results)		kwh	221 945
Dehumidifying		Kg/h	1,2
Degree of protection (IN) / (OUT)		(IP)	IPX4/IPX4
Class of electric protection (IN) / (OUT)		Class I / Class II	I/I
Max. input consumption		W	2150
Max. current		A	10
Compressor	Model		KSK103D33UEZ3(YJ)
	Type		Rotary
	Brand		GMCC
Indoor	Fan motor	Model	YKFG-13-4-38L-4
		Power input	W
		Capacity	uF
		Indoor Fan Speed RPM	1150/950/750
	Indoor fan	Dia. / Length	mm
	Indoor Air Circulation		m³/h
	Indoor Noise Level dB		dB(A)
	Net Dimension (LxWxH)		mm
	Packing Dimension (LxWxH)		mm
	Net Weight/Gross Weight		Kg
Outdoor	Fan motor	Model	ZKFN-34-10-1
		Power input	W
		Capacity	uF
		Outdoor Fan Speed RPM	790
	Outdoor fan	Length	mm
	Outdoor Noise Level dB		dB(A)
	Net Dimension (LxWxH)		mm
	Packing Dimension (LxWxH)		mm
	Net Weight/Gross Weight		Kg
	Refrigerant type/weight		g
Max. Discharge/Max. Suction pressure		Mpa	4,3/1.7
Refrigerant piping	Liquid side / Gas side		mm
	Max. refrigerant pipe length / Max. difference in level		m