



## Turbo mode

When the air conditioner goes into Turbo mode, it will maximize its cooling or heating capacity, making the room cooler or warmer rapidly.



## I FEEL

The remote control can keep track of the temperature at its current location and send the signal to the air conditioner, so it can optimize the room temperature for your maximum comfort.



## Anti-fungus

The air conditioner will start the Anti-fungus feature after exiting cooling and dehumidifying mode. It helps prevent fungi and bacteria from spreading in order to maintain a healthy environment.



## Horizontal swing

You can use the horizontal swing feature to adjust the airflow direction, if you prefer the air from the AC to blow sideways.

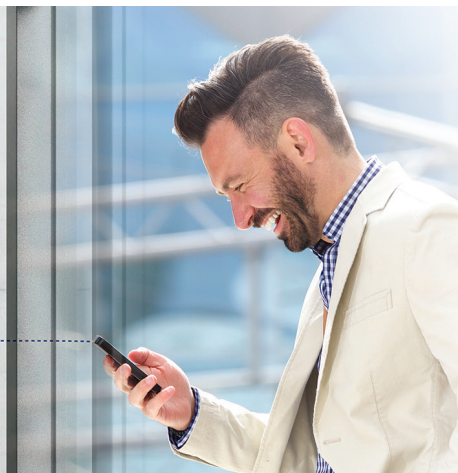


## Intelligent defrosting

If the condenser freezes while in heating mode during the times of low outside temperature, the AC will start intelligent defrosting mode.

## Wi-Fi

Wi-Fi feature means that Tesla air conditioner can also be controlled with mobile phones or other smart devices: an option that adds to your everyday convenience and comfort!





## Features

I Feel / Follow me, Breeze away, Smart Air Flow, ECO, Super EMC performance, Self-diagnostic, Intelligent defrosting, Self-Cleaning Function, Anti-fungus Function, Anti-Rust Cabinet, Independent Dehumidification mode, Super Quiet Design, Low-noise airflow, Turbo mode, Auto mode, Sleep Mode, Fault Code Indication, Auto restart, Timer, 4-Fan Speed, Five-speed outdoor fan, Low-Temperature Heating/Cooling, Honeycomb FILTER, Washable filter, 1W Standby, Dual side Drainage, Wide Voltage Range Start-up, 56°C sterilization, Refrigerant Leakage Detection, Remote control, Louver position memory function, Hidden led display, Display ON/OFF, Comfortable Cooling, Strong Cooling at 60°C, Rapid Cooling and Rapid Heating, RC holder, Smarter design louver, Easy cleaning, Hydrophilic Aluminum Fin, Backup Switch, Multi Fan Speed, I-clean, Intelligent on-off, Top plate/cover improved, Auto Swing Louver, Anti-Cold Air, Horizontal swing, Wi-Fi, Additional Health filter

<b>Capacity</b>			18000BTU
<b>Rated volt and frequency</b>		V/Hz	220-240V~/50HZ
<b>Mode</b>			<b>Cooling</b> <b>Heating</b>
<b>Rated capacity</b>	W	5100(1300-5300)	5200(1300-5300)
<b>Power input</b>	W	1670(280-1800)	1400(220-1500)
<b>Current input</b>	A	7.4(1.2-7.9)	6.2(1.0-6.6)
<b>SEER / Energy Class</b>			6,7/A++                      /
<b>SCOP / Energy Class - average</b>			/                      4,0/A+
<b>SCOP / Energy Class - warmer</b>			/                      5,3/A+++
<b>Operating range (°C)</b>		°C	16-49                      -15-30
<b>Energy consumption (per year, based on standard test results)</b>		kWh	266                      /
<b>Energy consumption (per year, based on standard test results) - average</b>		kWh	/                      1144
<b>Energy consumption (per year, based on standard test results) - warmer</b>		kWh	/                      937
<b>Dehumidifying</b>		Kg/h	2,5
<b>Degree of protection (IN) / (OUT)</b>		(IP)	IPX0/IPX4
<b>Class of electric protection (IN) / (OUT)</b>		Class I / Class II	I/I
<b>Max. input consumption</b>		W	1900
<b>Max. current</b>		A	9
<b>Compressor</b>		Model	KSN98D25UER3
		Type	Rotary
		Brand	GMCC
<b>Indoor</b>	Indoor Air Circulation	m <sup>3</sup> /h	850
	Indoor Noise Level dB	dB(A)	40/46/52/54/57
	Net Dimension	mm	900×310×225
	Packing Dimension	mm	970×382×302
	Net Weight / Gross Weight	Kg	10/13,5
<b>Outdoor</b>	Outdoor Noise Level dB	dB(A)	62
	Net Dimension	mm	705×530×280
	Packing Dimension	mm	825×595×345
	Net Weight / Gross Weight	Kg	23/27
	Refrigerant Type		R32
	Refrigerant Weight	Kg	0,54
	GWP		675
	tCO <sub>2</sub> eq.		0,36
	Max. Discharge / Max. Suction pressure	Mpa	4.3/2.5
<b>Refrigerant piping</b>	Liquid side / Gas side / Length	mm	Dg4/Dg10(1/4-1/2)
	Max. refrigerant pipe length / Max. difference in level	m	25/15