



Turbo mode

When the air conditioner goes into Turbo mode, it will maximize its cooling or heating capacity, making the room cooler or warmer rapidly.



I FEEL

The remote control can keep track of the temperature at its current location and send the signal to the air conditioner, so it can optimize the room temperature for your maximum comfort.



Anti-fungus

The air conditioner will start the Anti-fungus feature after exiting cooling and dehumidifying mode. It helps prevent fungi and bacteria from spreading in order to maintain a healthy environment.



Horizontal swing

You can use the horizontal swing feature to adjust the airflow direction, if you prefer the air from the AC to blow sideways.

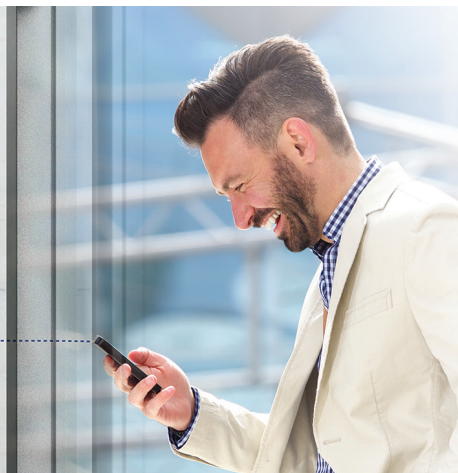


Intelligent defrosting

If the condenser freezes while in heating mode during the times of low outside temperature, the AC will start intelligent defrosting mode.

Wi-Fi

Wi-Fi feature means that Tesla air conditioner can also be controlled with mobile phones or other smart devices: an option that adds to your everyday convenience and comfort!





Features

I Feel / Follow me, Breeze away, Smart Air Flow, ECO, Super EMC performance, Self-diagnostic, Intelligent defrosting, Self-Cleaning Function, Anti-fungus Function, Anti-Rust Cabinet, Independent Dehumidification mode, Super Quiet Design, Low-noise airflow, Turbo mode, Auto mode, Sleep Mode, Fault Code Indication, Auto restart, Timer, 4-Fan Speed, Five-speed outdoor fan, Low-Temperature Heating/Cooling, Honeycomb FILTER, Washable filter, 1W Standby, Dual side Drainage, Wide Voltage Range Start-up, 56°C sterilization, Refrigerant Leakage Detection, Remote control, Louver position memory function, Hidden led display, Display ON/OFF, Comfortable Cooling, Strong Cooling at 60°C, Rapid Cooling and Rapid Heating, RC holder, Smarter design louver, Easy cleaning, Hydrophilic Aluminum Fin, Backup Switch, Multi Fan Speed, I-clean, Intelligent on-off, Top plate/cover improved, Auto Swing Louver, Anti-Cold Air, Horizontal swing, Wi-Fi, Additional Health filter

Capacity			12000BTU	
Rated volt and frequency		V/Hz	220-240V~/50HZ	
Mode			Cooling Heating	
Rated capacity		W	3500(800-3800) 3800(1000-4200)	
Power input		W	1180(100-1600) 1100(300-1600)	
Current input		A	5.6(0.7-7.8) 4.9(0.6-6.4)	
SEER-SCOP/ Energy Class		W/W	6,19/A++ 4,03/A+	
Operating range		(°C)	16~49°C -15~30°C	
Energy consumption (per year, based on standard test results)		kwh	198 938	
Dehumidifying		Kg/h	1	
Degree of protection (IN) / (OUT)		(IP)	IPX0/IPX4	
Class of electric protection (IN) / (OUT)		Class I / Class II	I/I	
Max. input consumption		W	1900	
Max. current		A	9,5	
Compressor		Model	KSN98D34UER3	
		Type	DC	
		Brand	GMCC	
Indoor	Fan motor	Model	YYK18-4B	
		Power input	W	/
		Capacity	uF	1,5
		Indoor Fan Speed RPM	r/min	1280/1130/990/850
	Indoor fan	Dia. / Length	mm	φ97.8x558
	Indoor Air Circulation		m³/h	600
	Indoor Noise Level dB		dB(A)	53
	Net Dimension (LxWxH)		mm	750x285x200
	Packing Dimension (LxWxH)		mm	802x346x267
	Net Weight/Gross Weight		Kg	8,5/10,5
Outdoor	Fan motor	Model	D-35-10A	
		Power input	W	48
		Capacity	uF	/
		Outdoor Fan Speed RPM	r/min	920/700/540
	Outdoor fan	Length	mm	407
	Outdoor Noise Level dB		dB(A)	62
	Net Dimension (LxWxH)		mm	705x279x530
	Packing Dimension (LxWxH)		mm	825x326x595
	Net Weight/Gross Weight		Kg	22.5/26
	Refrigerant type/weight		g	R32/560
Max. Discharge/Max. Suction pressure		Mpa	4.3/2.5	
Refrigerant piping	Liquid side / Gas side		mm	φ6,35/φ9,52
	Max. refrigerant pipe length / Max. difference in level		m	20/10